

Consumer Price Index Federated States of Micronesia

4th Quarter 2015
Volume 22



January 2016

Division of Statistics

Department of Resources & Development
Federated States of Micronesia

National Government

P.O. BOX PS -12

Palikir, Pohnpei FM 96941

Federated States of Micronesia

Telephone #: (691) 320-2620/2646/5133 Fax #: (691) 320-5854

E-mail: fsmstat@sbc.fm

Websites: www.sbc.fm or www.spc.int/prism/country/fm/stats

Consumer Price Index

Federated States of Micronesia

4th Quarter 2015

January 2016

Division of Statistics

Department of Resources and Development

National Government

Palikir, Pohnpei FM 96941

Federated States of Micronesia

Telephone #: (691) 320-2620/2646/5133

Fax #: (691) 320-5854

E-mail: fsmstat@sbc.fm

Websites: www.sbc.fm or www.spc.int/prism/country/fm/stats



DEPARTMENT OF RESOURCES & DEVELOPMENT

Federated States of Micronesia

P.O. Box PS-12

Palikir, Pohnpei FM 96941

Phone: (691) 320-2620/2646/5133; Fax: (691) 320-5854

Secretary's Message

It gives me great pleasure to present the 4th Quarter 2015 Consumer Price Index (CPI) publication containing information from the 2nd quarter of 2008 to 4th quarter of 2015.

This publication contains a wealth of information that measures quarterly changes in the price of a "basket" of goods and services. This "basket" of goods and services is representative of purchase by private households in the FSM. To ensure representation of the basket is reflective of current purchasing pattern of households, the content of the "basket" is periodically adjusted.

The CPI was rebased after the 2005 Household Income and Expenditure Survey (HIES) and the base year adjusted to is 2nd Quarter 2008. These adjustments help maintain the integrity of the CPI index, providing a more reliable measure of the changes in the cost of living across each of the FSM states. These changes are reflected in the CPI publications, beginning in Volume 16 and onward.

I acknowledge with great appreciation the valuable contributions of the many participating establishments for enabling us to continue the collection of prices on a quarterly basis for the selected items within the FSM CPI. With your cooperation and assistance, we will continue to publish the FSM CPI to account for the changes in the prices of goods and services consumed by the people residing in the FSM.

I would like to commend the staff at the Division of Statistics for their hard work and dedication in publishing this product.

Thank you,

/s/

Marion Henry

Secretary, R&D



DEPARTMENT OF RESOURCES & DEVELOPMENT

Federated States of Micronesia

P.O. Box PS-12

Palikir, Pohnpei FM 96941

Phone: (691) 320-2620/2646/5133; Fax: (691) 320-5854

Introduction

The Consumer Price Index (CPI) of the FSM is a vital economic indicator for the nation. It allows us to measure the change in prices paid by household consumers for the goods and services.

To compile the CPI, price data is collected every quarter, from selected businesses in the four states within the FSM. Prices are collected for a fixed “basket” of goods and services representative of the typical purchases by FSM households. Each basket item is weighted, to allow for the share of household spending on the item. For example, rice has a high weight because it is a big item of spending. The total weighted CPI basket is representative of household spending in the FSM.

As prices change, the total price of the weighted CPI basket changes as well. The FSM CPI is simply a measure of the price changes for this basket of items.

Several current changes had been made to maintain the integrity of the CPI index. Previous to 2nd Quarter 2008, the representation or “weight” of the items in the CPI basket was based on the results of the 1998 Household Income and Expenditure Survey (HIES). The content of the basket and the weight of the items were later adjusted based on the 2005 HIES results. The price collection of the new/revised items in the new basket began in 2nd Quarter of 2008, thus the change of the base period to 2nd Quarter 2008. This publication is volume 22 in the series of volumes and it contains the quarterly updates of 1st quarter to 4th quarter of 2015.

The presentation of the information in this current publication includes quarterly inflation rate, brief narrative analysis of CPI changes in the individual states and explanation to the tables -- to increase users' appreciation and understanding of the CPI.

This volume of the CPI publication features the following:

- The CPI for the entire FSM and the individual states;
- Imported and Domestic price indexes to assist the assessment of factors behind price changes in the FSM; and
- Charts so that price changes can be understood easily.

Once again, I would like to take this opportunity to thank all the agencies and individuals within and outside of the FSM for their assistance and contributions which have enabled us to regularly publish CPI for the FSM. It is essential that the good relationships established between all the parties remain strong for the development of CPI statistics.

Kalahngan, Kulo Mulalap, Kinisou Chapur, Kamagar and Thank you all.

/s/

Mathew Chigiya

Assistant Secretary

Division of Statistics and ICT, R&D

Table of Contents

| Content | Page |
|--|-------------|
| Secretary’s Message | i |
| Introduction..... | iii |
| Table Contents | v |
| Explanatory Notes..... | 1 |
| Brief Description of the FSM Consumer Price Index: | 1 |
| Weighting of the CPI ‘Basket’ | 1 |
| Price Collection..... | 1 |
| Understanding of the Index in the CPI..... | 2 |
| Analysis of CPI Changes..... | 2 |
| Domestic and Imported Price Indexes : | 2 |
| Analysis | 4 |
| Appendices..... | 16 |
| Appendix 1:Detailed Tables | 16 |
| Appendix 2: CPI Definitions | 21 |
| Appendix 3: Groups Composition..... | 23 |

List of Tables

| | |
|---|----|
| Table 1: Quarterly Inflation Rate by State and Commodity Group | 16 |
| Table 2: Annual Inflation Rate by State and Commodity Group..... | 17 |
| Table 3: 12- Month Average CPI Inflation Rate by State and Commodity Group..... | 18 |
| Table 4: CPI Index by State and Commodity Group..... | 19 |
| Table 5: Contribution to Annual CPI Change by State and Commodity Group..... | 20 |

List of Figures

| | |
|--|----|
| Figure 1a:Quarterly Inflation Rate-FSM | 4 |
| Figure 1b:Quarterly Inflation Rate-Kosrae | 5 |
| Figure 1c:Quarterly Inflation Rate-Pohnpei | 5 |
| Figure 1d:Quarterly Inflation Rate-Chuuk | 6 |
| Figure 1e:Quarterly Inflation Rate-Yap | 6 |
| Figure 2a:Annual Inflation Rate-FSM | 7 |
| Figure 2b:Annual Inflation Rate-State | 8 |
| Figure 3a:Index by Imported/Domestic-FSM | 9 |
| Figure 3b:Index by Imported/Domestic-Kosrae | 9 |
| Figure 3c:Index by Imported/Domestic-Pohnpei | 10 |
| Figure 3d:Index by Imported/Domestic-Chuuk..... | 10 |
| Figure 3e:Index by Imported/Domestic-Yap | 11 |
| Figure 4a:Index by Group-FSM..... | 12 |
| Figure 4b:Index by Group-Kosrae | 13 |
| Figure 4c:Index by Group-Pohnpei | 14 |
| Figure 4d:Index by Group-Chuuk | 14 |
| Figure 4e:Index by Group-Yap | 15 |

Explanatory Notes

Brief Description of the FSM Consumer Price Index:

The Consumer Price Index (CPI) is a measure which provides information on the cost of living for the FSM, including each of the four states which make up the FSM. It achieves this by producing an index, which indicates the cost of living at a particular time point, which in turn can be compared to other time points to determine if the cost of living is increasing or decreasing.

The index is produced by collecting prices for a “basket” of goods each quarter, which reflects the spending patterns of a typical household in FSM (nb: the “basket” changes slightly between the states, due to the different spending patterns of each of the four states). These prices are then monitored over time to determine if the cost for each item has increased or decreased. This ‘basket’ covers a wide range of goods and services, arranged in the following seven groups: Food; Alcohol, tobacco, sakau & betelnut; Clothing & footwear; Housing; Fuel, light & water; Services; and Miscellaneous. For more information on what items make up each group, see Appendix 3.

Weighting of the CPI ‘Basket’

The importance of each item being priced each quarter is not the same. For example, a typical household spends a lot more on rice in a year than they would on soap, so any price change in rice would have more effect on the cost of living for a household, than any price change in soap. For this reason, “weights” are attached to each item being priced, to indicate its importance to a household’s cost of living, and hence to the calculation of the CPI. These weights are constructed in such a way that they add to 100.0 for all the items being priced. What this means is that if the weights for items being priced in the food group add to 37.1; it means that 37.1 per cent of a typical household’s expenditure is on food.

These “weights” have been determined from the *2005 Household Income and Expenditure Survey* (HIES), which collected information about the expenditure patterns from nearly 1,400 households across all four states of FSM.

Price Collection

As mentioned above, the prices are collected in the middle month of each quarter either by telephone or on site survey by qualified CPI enumerators. The items which get priced in each state are often priced from more than one establishment, sometimes from as many as 6 or 7 stores/establishments in order to get a good average price for that item. There is an approximately 1,671 prices collected from all four states. In some instances however, only one outlet produces the item. For example the price of electricity will come from just the one source in each state – e.g. for Pohnpei, price will be collected from PUC only. The prices collected are used to compute the total cost of the basket.

Understanding of the index in the CPI

The consumer Price Index as its name suggests is primarily an index, which helps us to determine quarterly and annual changes in the cost of living over time. This index needs to be re-set each time a new basket of goods is determined (approximately every 5-10 years), as the spending habits of households change over time-this process is called a re-base. The value chosen as the index for each group and sub-group at the time the new basket of goods is introduced is 100. If the index rises to 120 over the space of 2 years for a particular group, this simply means that the cost of living of that group has increased by 20% in the 2 year period since the re-base. If the index drops to a value below 100 for a particular group, say 93, then this simply means the cost of living for that group has declined by 7% since the re-base.

Note: When the index is re-set to 100 when a re-base takes place, the indexes for each series prior to this time point are all pro-rated in such a way so the percentage changes recorded between quarters are maintained.

Analysis of CPI Changes:

Movements in index numbers from one period to another can be expressed in index points or as percentage changes. The following example illustrates the method of calculating changes in index points and percentage changes between any two periods. It is simply a difference between the current quarter index and the previous quarter index. The difference is divided into the previous quarter's index to generate the percent change between those two periods.

Example (quarterly change)

Reference Periods: 4th Quarter 2015 to 3rd Quarter 2015
 Change in index: Index 4th Q, 2015 – Index 3rd Q, 2015
 Change in Index: 127.97 – 128.19 = -0.22
 Change in Percent: $(-0.22)/128.19 = -0.00171$
 $0.00171 * 100 = -0.17\%$

Example (annual change)

Reference Periods: 4th Quarter 2015 to 4th Quarter 2014
 Change in Index: Index 4th Q, 2015 – Index 4th Q, 2014
 Change in Index: 128.0 – 129.2 = -1.2
 Change in Percent: $(-1.2)/129.2 = -0.0092$
 $-0.0092 * 100 = -0.9\%$

Domestic and Imported Price Indexes

These sub-indexes can give an indication of factors driving CPI price changes. The import index includes only items that are imported, such as canned foods, fuels, rice, motor vehicles. On the other hand, the domestic index includes items and services that are locally produced and have a local component, such as fresh fish, local produce, bakery goods, taxi fares and electricity.

Note, however, that the prices for domestic items may be determined by prices of imported items. For example, if price of fuel, an imported commodity, should increase this will cause an upward movement in the domestic CPI index, because a higher fuel price causes an increase in price for taxi fares and electricity, both of which are reflected in the domestic index.

In the FSM, like other countries in the Pacific, imported items and services dominate household consumption, resulting in a weight of 76.31 percent. In other words, imported items represent more than $\frac{3}{4}$ of the overall consumer spending, while domestic items make up just less than $\frac{1}{4}$ of consumer spending.

For Further Information

In addition to the statistics included in this publication, the Statistics Division, Department of Resources and Development may have further details available. Inquiries should be directed to Mathew Chigiya, Assistant Secretary, and Division of Statistics at phone: (691)320-2620/2646/5133; Fax: (691)320-5854; or email: mchigiya@sbc.fm or mchigiya@fsmrd.fm.

ANALYSIS

Section 1: Quarterly Inflation for FSM and the four States

Figure 1a. Quarterly Inflation Rate for FSM

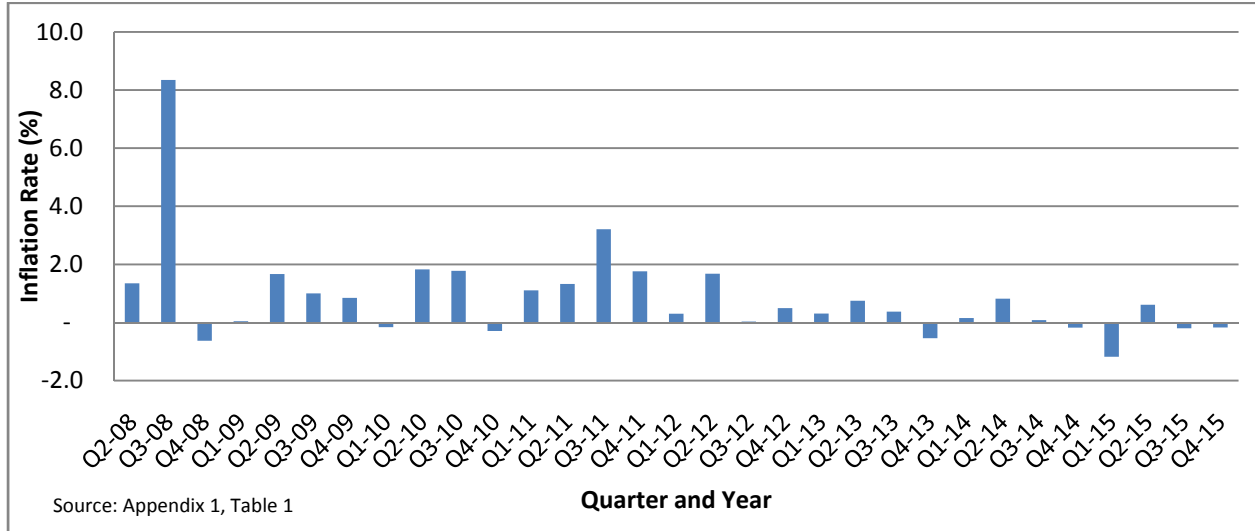


Figure 1a shows that the FSM quarterly inflation rate for the fourth quarter of 2015 was a -0.17 percent, which was about the same as the previous quarter at -0.20 percent. The figure also shows that the first quarter of 2015 has the lowest decrease (-1.18) since the base year - 2nd quarter of 2008.

The groups with an increase in the current reporting quarter were Housing, at 2.6 percent, Clothing & footwear 2.2 percent, and Fuel, light & water 1.7 percent. All the other groups had decreased (see Table 1, in Appendix 1.).

Domestic items had an increase of 1.0 percent for the current quarter while imported items decreased by -0.5 percent. More detail on the quarterly decreases for FSM can be found in Table 1, in Appendix 1.

Figure 1b. Quarterly Inflation Rate for Kosrae

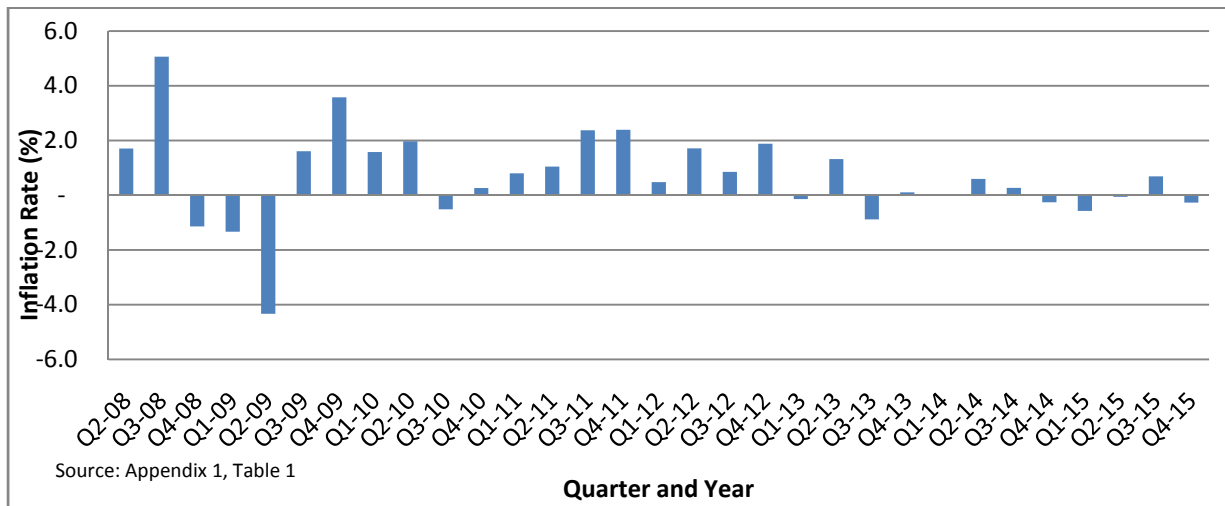
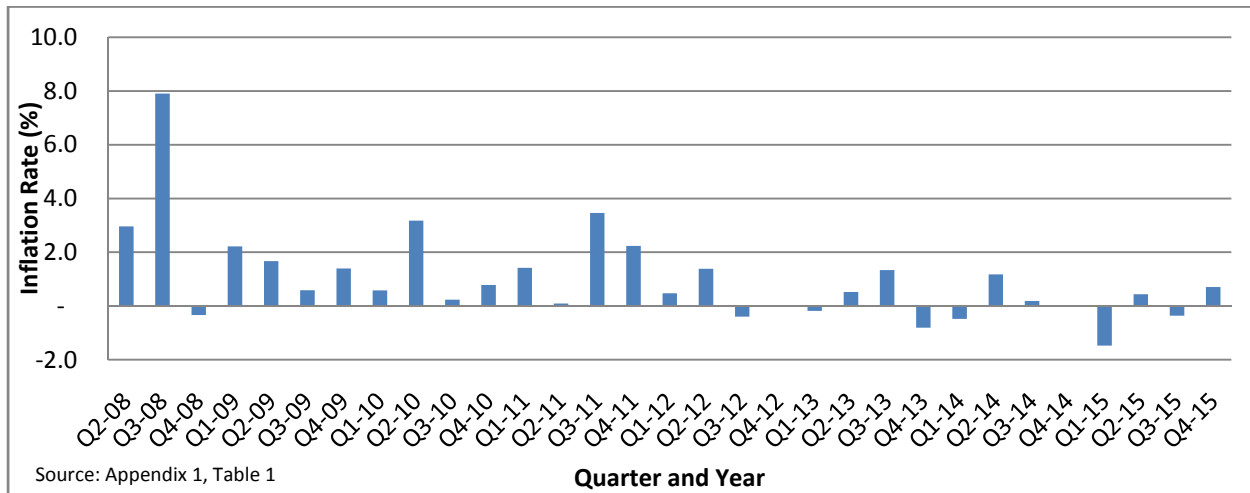


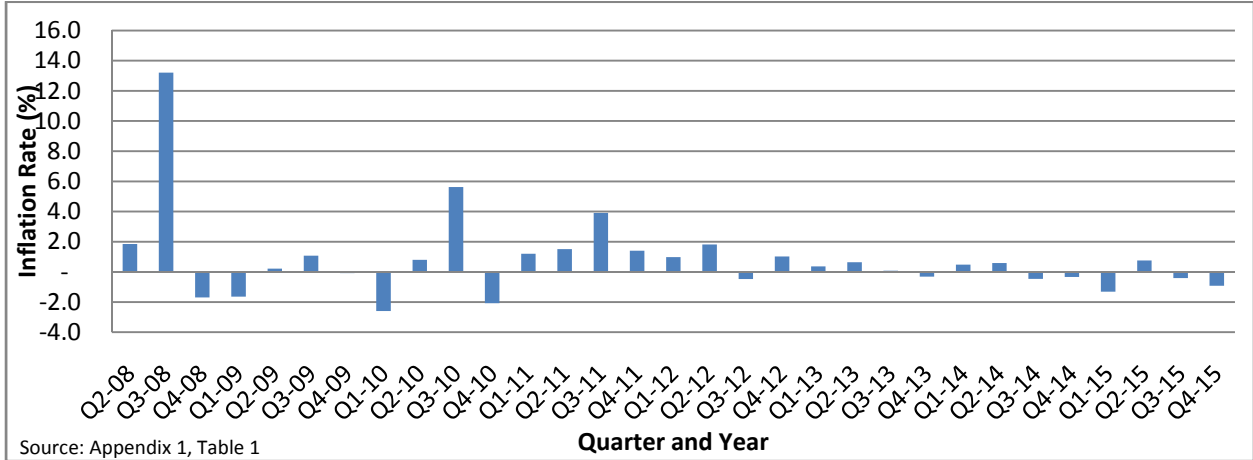
Figure 1b presents Kosrae’s quarterly inflation. The rate for fourth quarter of 2015 was -0.27 percent, decreasing from 0.69 percent in the previous quarter. This suggests an overall decrease in the prices of goods.

Figure 1c. Quarterly Inflation Rate for Pohnpei



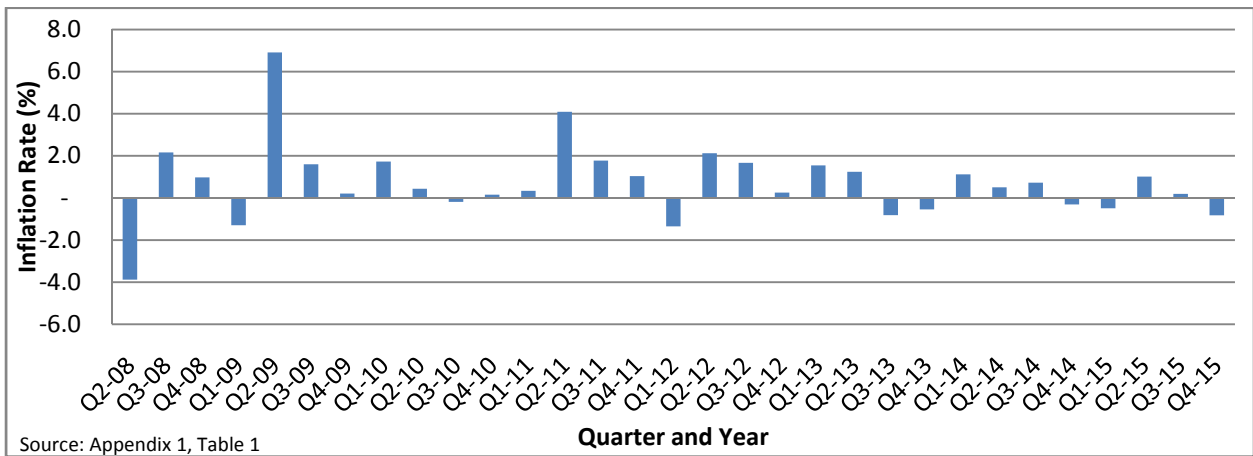
In contrast to Kosrae, Pohnpei’s quarterly inflation rate for fourth quarter 2015 was 0.7 percent, increasing from the -0.4 percent in the prior quarter. This suggests an overall increase in the prices of goods.

Figure 1d. Quarterly Inflation Rate for Chuuk



Chuuk’s quarterly inflation rate for the fourth quarter of 2015 was -0.9 percent, and it is a decrease compared to the previous quarter -0.04 percent. This suggests an overall decrease in the prices of goods.

Figure 1e. Quarterly Inflation Rate for Yap



Yap’s quarterly inflation rate for the fourth quarter of 2015 was -0.8 percent. Yap’s current quarter has a very minor decrease compared to the previous quarter 0.2 percent. This suggests an overall decrease in the prices of goods.

Figure 1b to 1e showed that price changes varied across the states in the fourth quarter of 2015 in comparison to the previous quarter. Pohnpei experiences an overall increase in prices while the other three states experience a decline.

Section 2: Annual Inflation for FSM and the four States

Figure 2a. Annual Inflation Rate - FSM

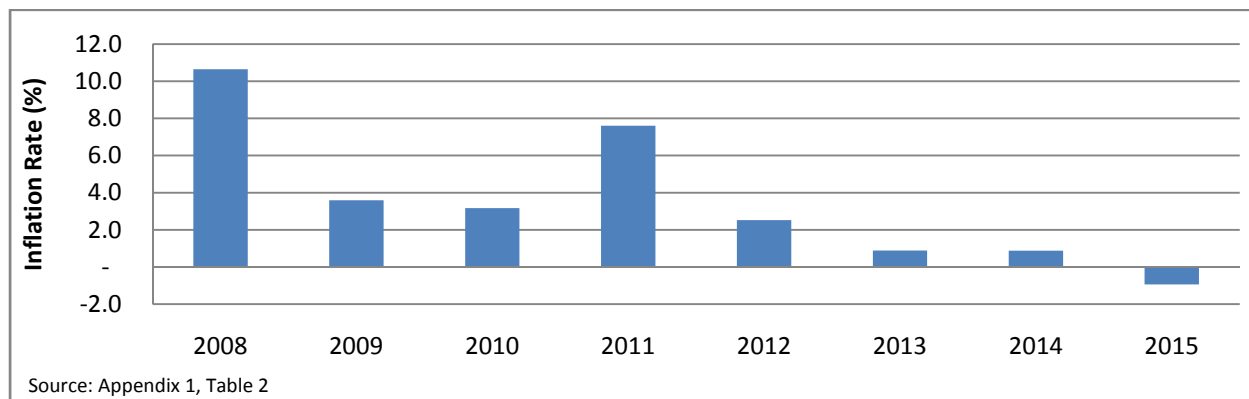


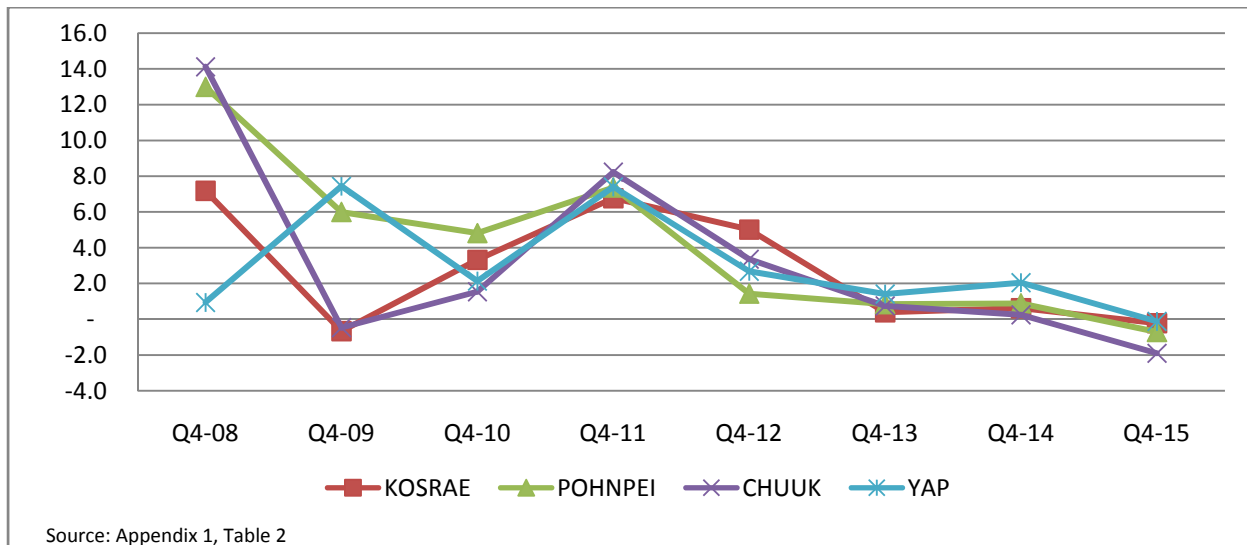
Figure 2a above shows that the FSM annual inflation rate for the fourth quarter of 2015 was -0.9 percent, which was the lowest rate as compared to the same quarter in previous years.

The overall decline is attributed to more groups, including some of the major groups, seeing decreases in the order of significance being; Fuel, light & water (-7.3%), Services (-2.0%), Food (-1.4%) and Miscellaneous (-0.5%). On the other hand, the groups which increased are: Clothing & footwear (8.7%), Housing (2.5%), and Alcohol, tobacco, sakau & betel nut (ATSB) (1.7%).

At the item level, the major contributing factors to the -0.9 percent annual inflation were the decrease in the prices of rice, gasoline and electricity.

Domestic items had an increase of 0.002 percent for the last 12 months, and imported items decreased by -1.3 percent for the same period.

Figure 2b. Annual Inflation Rate by State



Recently, all states continue to have an overall negative annual inflation rate; indicating that the price of things had decreased consistently, especially over the past five years. (see details in Appendix1, Table 2).

Kosrae’s annual inflation rate for the fourth quarter of 2015 was -0.2 percent, a decrease of 0.8 percentage points compared to the fourth quarter of 2014. The main contributing groups to this decrease were the groups of Food (chicken), Services (gasoline) and Fuel, light & water (electricity).

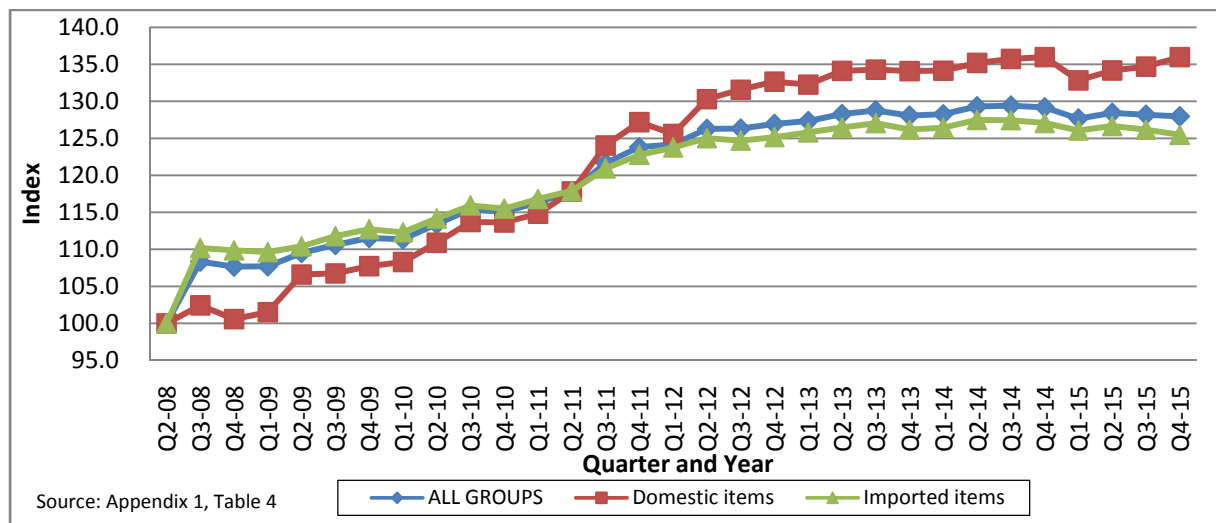
Pohnpei’s annual inflation rate for the fourth quarter of 2015 was -0.7 percent, and it is a decrease of -1.6 percentage points compared to fourth quarter 2014. The main contributing groups to this decrease were the groups of Food (rice), Services (fishing equipment) and Fuel, light & water (electricity).

Chuuk’s annual inflation rate for the fourth quarter of 2015 was -0.9, a decrease of -2.2 percentage point compared to the fourth quarter 2014. The main contributing groups to this decrease were the groups of Food (rice), Services (gasoline) and Fuel, light & water (electricity).

Yap’s annual inflation rate for the fourth quarter of 2015 was -0.1, a decrease of -2.2 percentage points compared to the fourth quarter of 2014. The main contributing groups to this decrease were the groups of ATSB (beer), Services (gasoline) and Fuel, light & water (kerosene).

Section 3: Change in CPI Index by Imported/Domestic, FSM and the States

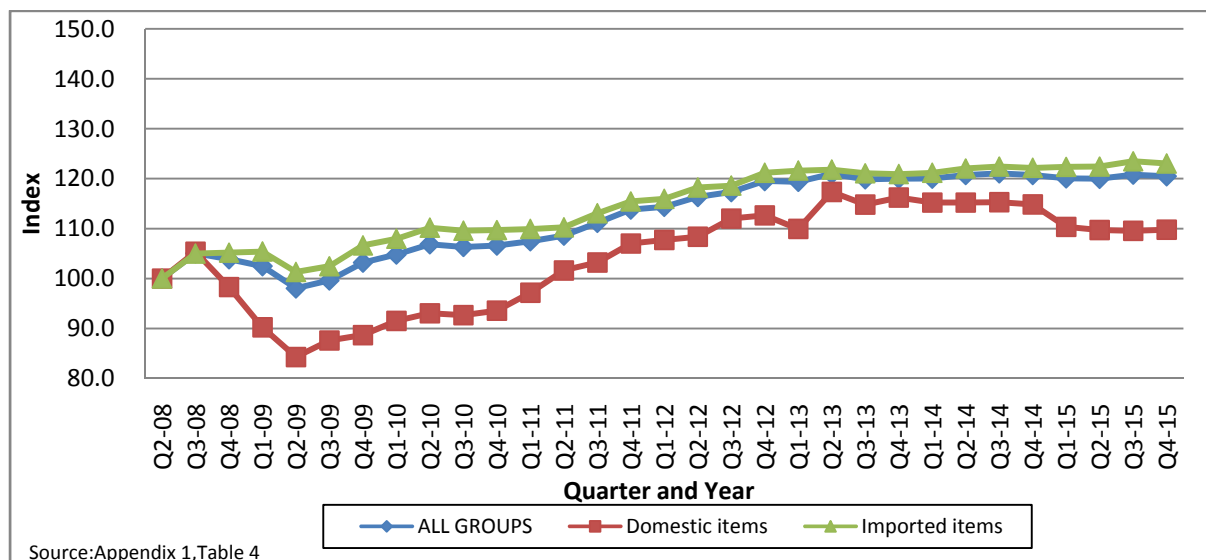
Figure 3a. CPI Index by Imported/Domestic - FSM



As can be seen from Figure 3a, the CPI index for all groups has grown to 128.0 in the fourth quarter of 2015, from the base value of 100 in the second quarter of 2008 (base year). This represents a rise of about 28 percent in the cost of living for this period.

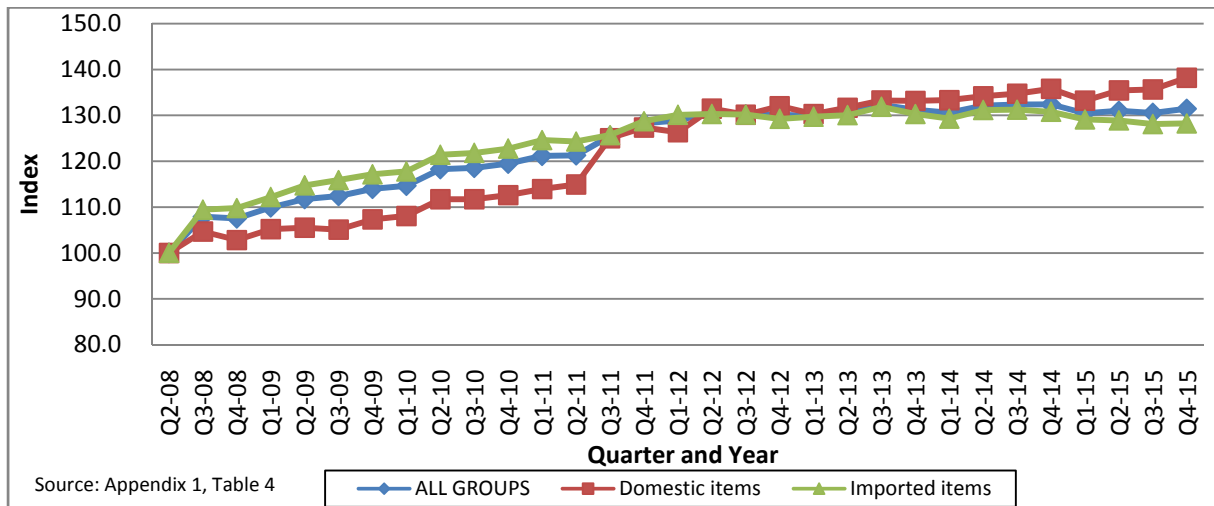
The CPI index for domestic items has grown to 136.0 since the base year. As for the imported items the index grew to 125.5. Over the period observed, there has been a steady increase in the cost of domestic items, to the extent they have now increased at a faster rate than imported items.

Figure 3b. Index by Imported/Domestic - Kosrae



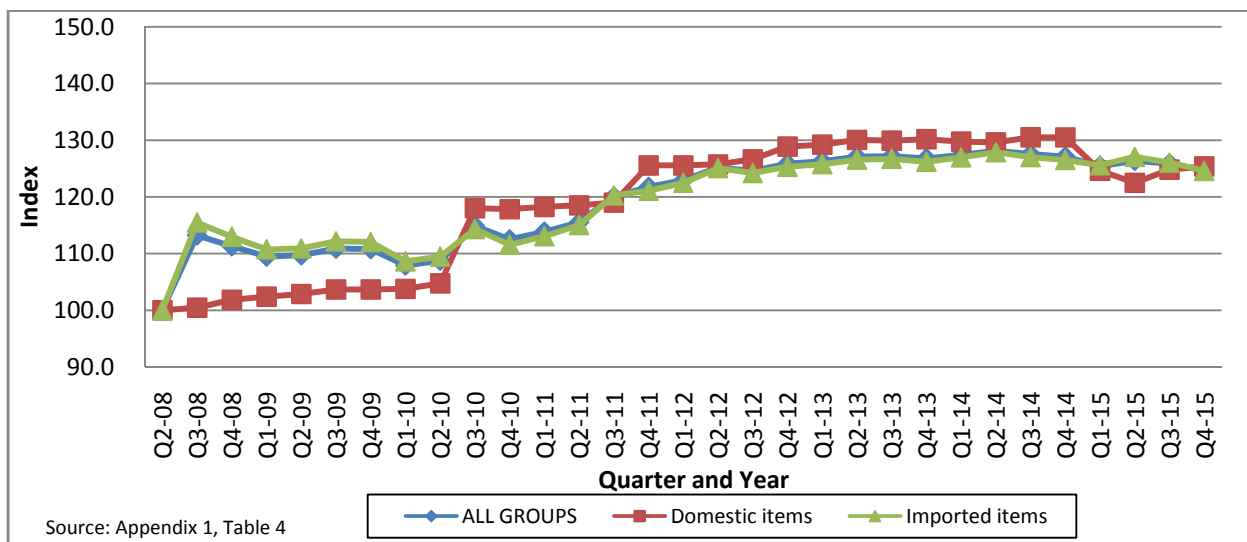
In Kosrae, since the base year (Q2_2008) cost of domestic items has grown to 109.8, whereas for imported items, the index has only grown to a little over 123.0. The index for domestic has been steadily increased since second quarter 2009. The significant decline seen in second quarter of 2009 was due to the decrease price in electricity. It is only in Kosrae that the imported index is consistently higher than the domestic index.

Figure 3c. Index by Imported/Domestic - Pohnpei



In Pohnpei, the index for domestic items has increased nearly to 138.2, whereas the index for imported items has increased to around 128.2 since the base year. The index for domestic items is slightly higher compared to the imported items. However, the gap between the domestic and imported has become wider especially in the past few quarters due to the significant increase in the cost of domestic items.

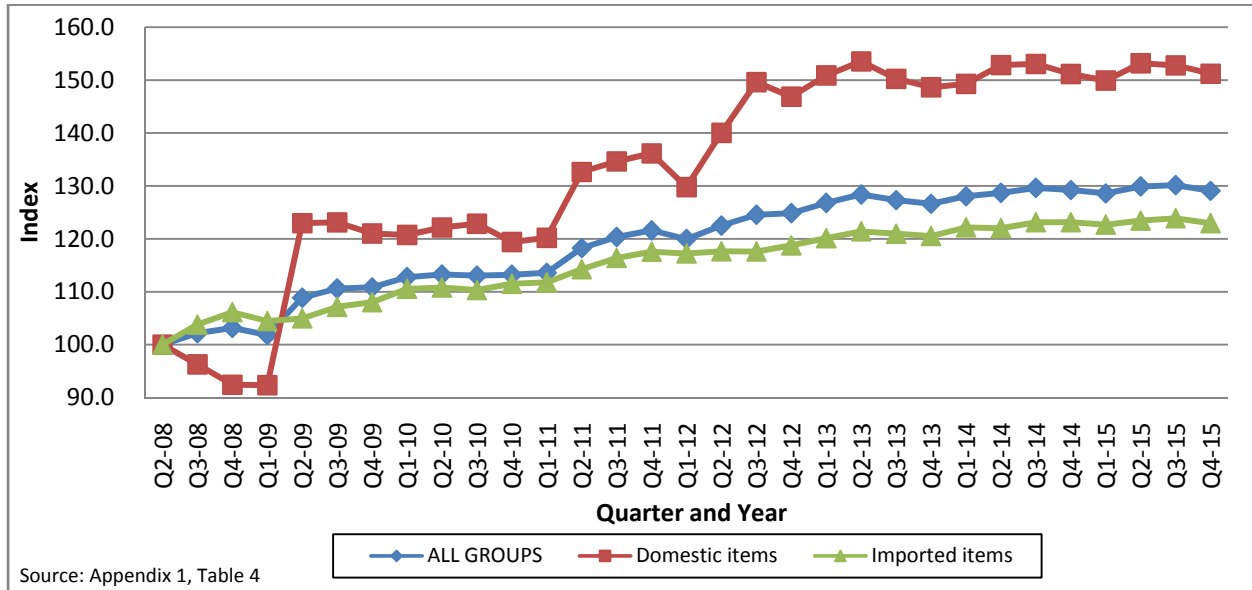
Figure 3d. Index by Imported/Domestic - Chuuk



In Chuuk, the index for domestic items slowly increased to 125.4 and imported items up to 124.6, since the base year.

The declining trend observed in the first and second quarter of 2015 was due to a decrease in the cost of electricity; bringing it close to the level it was in third quarter of 2010. The same time a sharp increase in the index for domestic items compared with second quarter of the same year was observed due largely to an increase in the cost of electricity. The sharp increase in the index for imported items took place in the third quarter of 2008, largely due to a very high increase in the price of rice. For fourth quarter of 2015, a moderate decrease in the index of imported items due to lower prices of rice and chicken.

Figure 3e. Index by Imported/Domestic - Yap

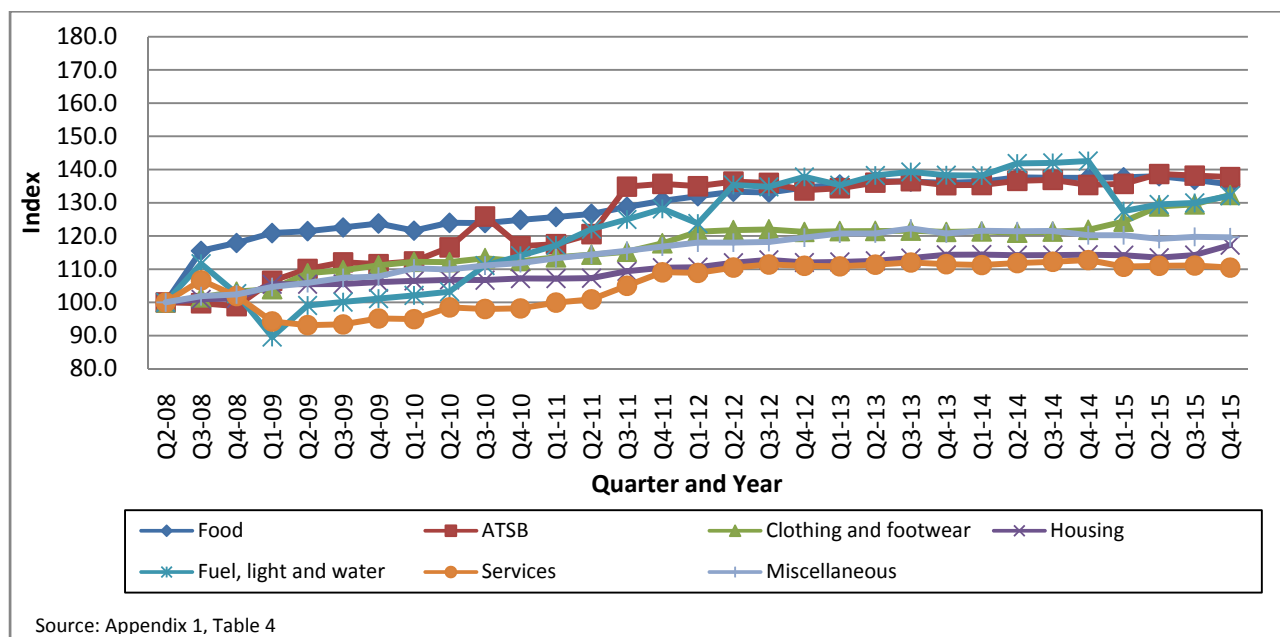


For Yap, the index for domestic items has grown to 151.2 in the fourth quarter of 2015 whereas for imported items the index has only grown to 122.9 since the base year. The large increase for domestic items in second quarter of 2009 was due to the increase in the price of electricityⁱ. The increase in second quarter of 2011 was due to the increase in the price of betel nut. The increase in second quarter 2012 was due to increase in price of gasoline and electricity. Over the period observed, there has been a steady increase in cost of domestic items to the extent that they have now increased at a faster rate than imported items.

ⁱ In December 2008, legislation YSL 7-25 was amended to effectuate a new rate structure moving from \$0.15 per kilowatt hour to \$0.32 per kilowatt hour. This price change came into effect in second quarter 2009.

Section 4: Change in Index by Group, FSM and the four States

Figure 4a. Index by Group - FSM



As can be seen from Figure 4a, the index increased for all seven groups since the base year. The three groups with an increase of at least one third since the base year were Alcohol, tobacco, sakau & betel nut group (137.7), Food (135.5), Clothing & footwear (132.3) and Fuel, light & water (132.1).

The noticeable decreases of the index for the Fuel, light & water group in the first quarter of 2009, 2012 and 2015 were largely due the changing prices of electricity across the states.

Figure 4b. Index by Group - Kosrae

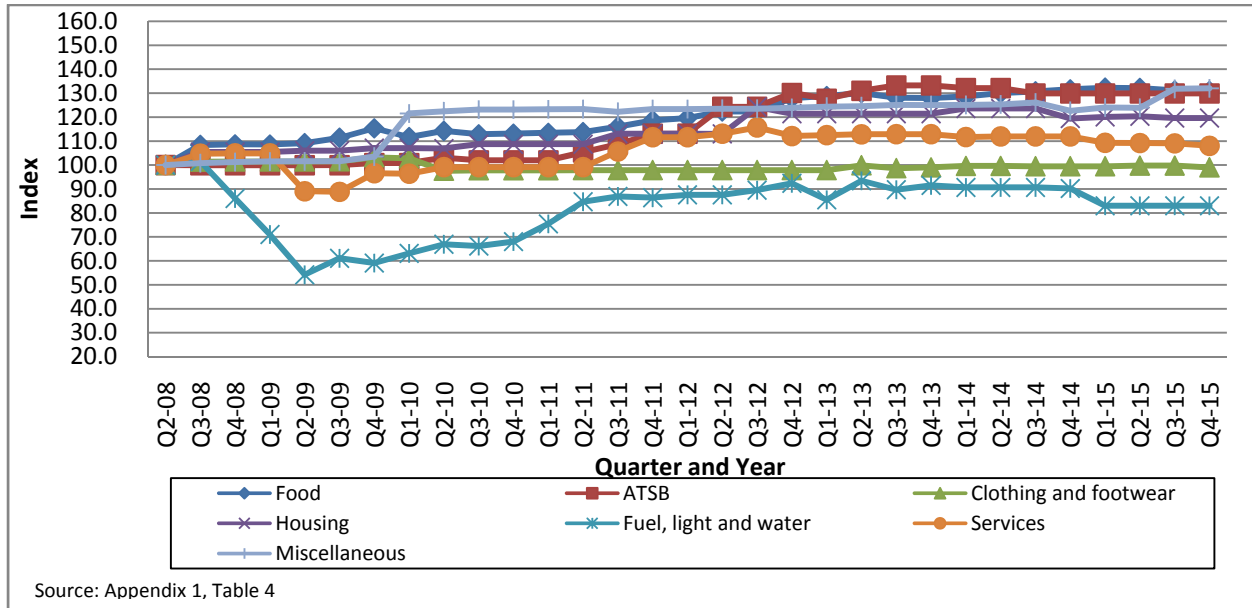
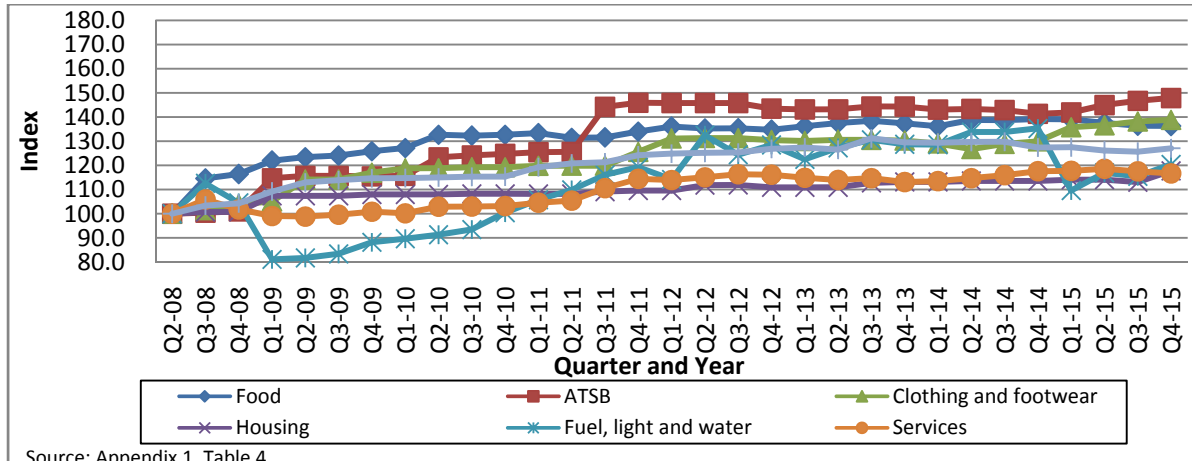


Figure 4b looks at the CPI index by group for Kosrae. The index increased for all groups since the base year. The Miscellaneous group recorded the highest index of 132.0 in fourth the quarter of 2015, showing an increase of 32 percent since the base year (Q2 2008). This increase was mainly due to the rise in the price of cars. The two other groups which recorded higher indices were Food (130.9) and ATSB (129.9)

The dips seen in the Fuel, light & water group were due to the decrease in the cost of electricity. This group has maintained an index well below the indices for all groups since the base year (Q2 2008). The other groups have otherwise been stable for the past few years. The spike in the index for Miscellaneous group in the third quarter 2015 was due to increase in the price of cars as mentioned above.

Figure 4c. Index by Group – Pohnpei

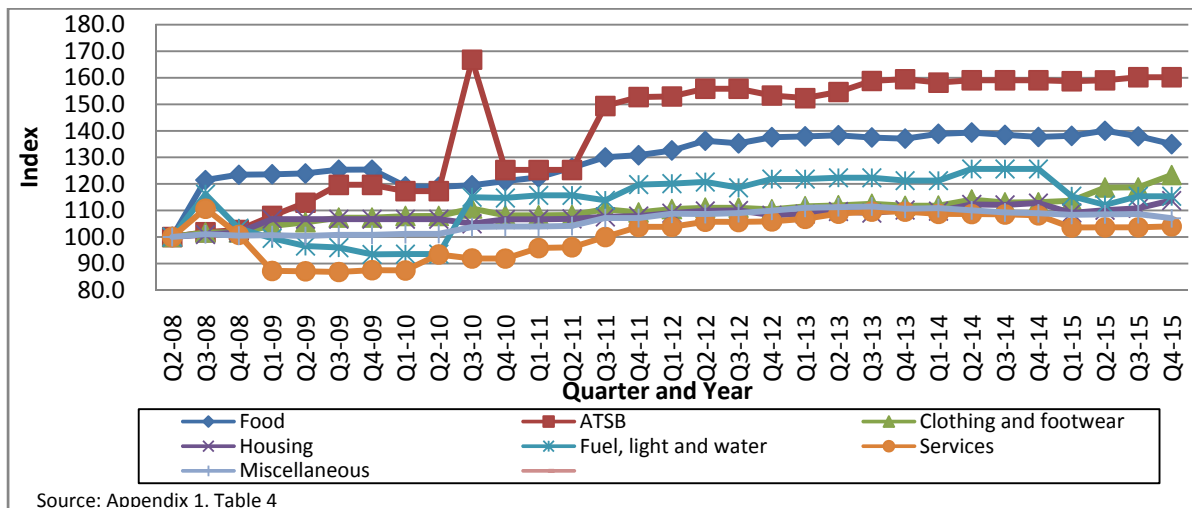


Source: Appendix 1, Table 4

The index for Pohnpei also increased for all groups since the base year. The index for the Alcohol, tobacco, sakau & betel nut group showed the biggest increase, reaching 147.9 in the current quarter (an increase of about 48 percent since the base year). The Clothing and footwear and the Food groups also showed notable increases, their indices reaching 138.8 and 136.3 in the current quarter, respectively.

The sharp declines of Fuel, light & water back in first quarter of 2009 and in first quarter 2015 were largely due to the decrease in the cost of electricity. The noticeable increase of the index for the Alcohol, tobacco, sakau & betel nut group in third quarter of 2011 was mainly due to the increase in the price of Sakau. The ATSB index has remained stable since then.

Figure 4d. Index by Group - Chuuk

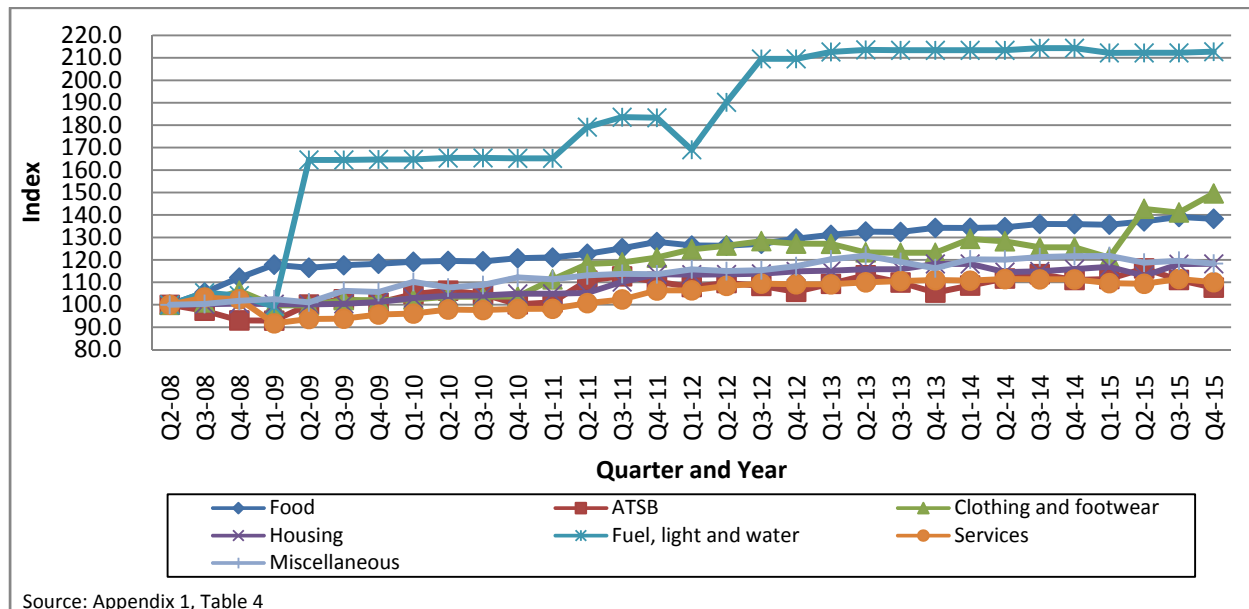


Source: Appendix 1, Table 4

In Chuuk, the two groups with an increase of at least one third since the base year were Alcohol, tobacco, sakau & betel nut group (160.2) and Food group (135.0).

The index for ATSB went as high as 166.8 in third quarter of 2010 due to the rise in the price of cigarette. The Food index gradually increased between third quarter 2010 and second quarter 2015, suggesting the gradual rise in the price of food items. However, it has declined in the last two quarters due to the lower price of rice. The Fuel, light & water group also showed a noticeable decline in first quarter 2015 due to the decrease in the cost of electricity.

Figure 4e. Index by Group - Yap



Source: Appendix 1, Table 4

In Yap, the Fuel, light and water group remain the highest increased group with an index of 212.8 in the current quarter. The Fuel, light & water group peaking at 214.3 was in the third quarter of 2014. The sharpest increase took place in second quarter of 2009 with an index of above 160, reflecting the change of the electricity rate structure at the time (see footnote discussion of Yap under Figure 3e). Another sharp increase in the cost of electricity was in third quarter of 2012 bringing the index of its group to over 200. The greatest rate of increase in the cost of electricity in Yap has brought the index for the Fuel, light and water group to above 210 while all other states indices for the same group remain around 120 or lower.

Clothing & footwear group and Food group also showed noticeable increase with the index rising to 149.6 and 138.3 respectively in the current quarter.

Appendix 1: Detailed Tables

Table 1: Quarterly Inflation Rate by State and Commodity Group¹

| | Weight | Q2-08 | Q3-08 | Q4-08 | Q1-09 | Q2-09 | Q3-09 | Q4-09 | Q1-10 | Q2-10 | Q3-10 | Q4-10 | Q1-11 | Q2-11 | Q3-11 | Q4-11 | Q1-12 | Q2-12 | Q3-12 | Q4-12 | Q1-13 | Q2-13 | Q3-13 | Q4-13 | Q1-14 | Q2-14 | Q3-14 | Q4-14 | Q1-15 | Q2-15 | Q3-15 | Q4-15 | |
|-----------------------|--------|-------|-------|-------|-------|-------|-------|-------|-------|-------|-------|-------|-------|-------|-------|-------|-------|-------|-------|-------|-------|-------|-------|-------|-------|-------|-------|-------|-------|-------|-------|-------|------|
| FSM | | | | | | | | | | | | | | | | | | | | | | | | | | | | | | | | | |
| ALL GROUPS | 100.00 | 1.3 | 8.3 | -0.6 | 0.0 | 1.7 | 1.0 | 0.8 | -0.2 | 1.8 | 1.8 | -0.3 | 1.1 | 1.3 | 3.2 | 1.8 | 0.3 | 1.7 | 0.034 | 0.5 | 0.3 | 0.7 | 0.4 | -0.54 | 0.15 | 0.82 | 0.08 | -0.18 | -1.18 | 0.61 | -0.20 | -0.17 | |
| Domestic items | 23.69 | -1.9 | 2.4 | -1.8 | 0.9 | 5.0 | 0.1 | 0.9 | 0.5 | 2.4 | 2.5 | -0.1 | 1.0 | 2.6 | 5.3 | 2.5 | -1.3 | 3.7 | 1.0 | 0.8 | -0.3 | 1.4 | 0.1 | -0.1 | 0.0 | 0.8 | 0.4 | 0.2 | -2.3 | 1.0 | 0.4 | 1.0 | |
| Imported items | 76.31 | 2.6 | 10.2 | -0.3 | -0.2 | 0.7 | 1.3 | 0.8 | -0.4 | 1.7 | 1.5 | -0.4 | 1.1 | 0.9 | 2.6 | 1.5 | 0.8 | 1.0 | -0.3 | 0.4 | 0.5 | 0.5 | -0.7 | 0.2 | 0.8 | -0.0 | -0.3 | -0.8 | 0.5 | -0.4 | -0.5 | | |
| ALL GROUPS | 100.00 | 1.3 | 8.3 | -0.6 | 0.0 | 1.7 | 1.0 | 0.8 | -0.2 | 1.8 | 1.8 | -0.3 | 1.1 | 1.3 | 3.2 | 1.8 | 0.3 | 1.7 | 0.0 | 0.5 | 0.3 | 0.7 | 0.4 | -0.54 | 0.15 | 0.82 | 0.08 | -0.18 | -1.18 | 0.61 | -0.20 | -0.17 | |
| Food | 37.10 | 2.8 | 15.5 | 2.0 | 2.5 | 0.5 | 0.9 | 1.0 | -1.7 | 1.9 | -0.1 | 0.8 | 0.7 | 0.7 | 1.7 | 1.4 | 1.1 | 1.0 | -0.2 | 1.1 | 0.7 | 0.7 | -0.1 | -0.3 | 0.2 | 1.0 | -0.1 | -0.0 | 0.1 | 0.3 | -0.8 | -1.0 | |
| ATSB ² | 12.17 | 1.5 | -0.2 | -0.9 | 7.7 | 3.3 | 1.8 | -0.5 | 0.7 | 3.8 | 8.0 | -7.1 | 0.5 | 2.6 | 11.8 | 0.6 | -0.5 | 1.0 | -0.3 | -1.7 | 0.5 | 1.2 | 0.3 | -0.9 | 0.0 | 0.9 | 0.2 | -1.1 | 0.2 | 2.2 | -0.3 | -0.3 | |
| Clothing and footwear | 5.52 | 0.2 | 1.5 | 1.7 | 0.7 | 4.6 | 0.8 | 1.3 | 1.0 | -0.1 | 1.1 | -0.8 | 1.0 | 0.7 | 0.7 | 2.2 | 3.0 | 0.4 | 0.2 | -0.6 | 0.2 | 0.0 | 0.1 | -0.3 | 0.1 | -0.4 | 0.3 | 0.4 | 2.1 | 3.7 | 0.5 | 2.2 | |
| Housing | 3.18 | 1.2 | 0.9 | 0.2 | 4.2 | 0.0 | 0.1 | 0.5 | 0.4 | 0.2 | -0.0 | 0.4 | -0.0 | 0.1 | 1.9 | 1.0 | 0.1 | 1.2 | 0.8 | -0.7 | 0.1 | 0.3 | 0.7 | 0.9 | 0.0 | -0.2 | 0.0 | 0.1 | -0.1 | -0.7 | 0.7 | 2.6 | |
| Fuel, light and water | 9.33 | -8.4 | 11.7 | -8.1 | -12.7 | 10.6 | 1.0 | 1.1 | 1.0 | 1.1 | 7.6 | 2.7 | 2.7 | 4.2 | 2.4 | 2.6 | -3.4 | 9.4 | -0.4 | 2.2 | -1.8 | 2.2 | 0.8 | -0.7 | -0.1 | 2.6 | 0.1 | 0.4 | -10.6 | 1.6 | 0.4 | 1.7 | |
| Services | 16.89 | 2.9 | 6.6 | -4.4 | -7.5 | -1.2 | 0.2 | 1.9 | -0.2 | 3.7 | -0.5 | 0.2 | 1.8 | 1.0 | 4.1 | 3.9 | -0.2 | 1.5 | 0.8 | -0.3 | -0.1 | 0.5 | 0.6 | -0.5 | -0.2 | 0.5 | 0.3 | 0.4 | -1.8 | 0.2 | 0.1 | -0.6 | |
| Miscellaneous | 15.82 | 0.3 | 1.9 | 0.5 | 2.2 | 1.1 | 1.5 | 0.4 | 2.3 | -0.3 | 1.1 | 0.7 | 1.3 | 1.0 | 1.0 | 1.1 | 1.0 | -0.0 | 0.2 | 1.1 | 1.0 | 0.0 | 1.3 | -1.2 | 0.7 | -0.1 | 0.1 | -1.1 | -0.0 | -0.9 | 0.5 | -0.1 | |
| KOSRAE | | | | | | | | | | | | | | | | | | | | | | | | | | | | | | | | | |
| ALL GROUPS | 7.67 | 1.7 | 5.1 | -1.1 | -1.3 | -4.3 | 1.6 | 3.6 | 1.6 | 2.0 | -0.5 | 0.3 | 0.8 | 1.0 | 2.4 | 2.4 | 0.5 | 1.7 | 0.9 | 1.9 | -0.1 | 1.3 | -0.9 | 0.10 | 0.01 | 0.60 | 0.27 | -0.26 | -0.57 | -0.06 | 0.69 | -0.27 | |
| Domestic items | 1.47 | 0.2 | 5.4 | -6.7 | -8.2 | -6.6 | 3.9 | 1.2 | 3.2 | 1.7 | -0.4 | 1.0 | 3.8 | 4.6 | 1.6 | 3.7 | 0.7 | 0.6 | 3.4 | 0.6 | -2.4 | 6.7 | -2.2 | 1.2 | -0.9 | - | 0.1 | -0.4 | -3.9 | -0.6 | -0.1 | 0.2 | |
| Imported items | 6.20 | 2.2 | 5.0 | 0.2 | 0.2 | -3.9 | 1.1 | 4.1 | 1.3 | 2.0 | -0.5 | 0.1 | 0.2 | 0.3 | 2.6 | 2.1 | 0.4 | 2.0 | 0.3 | 2.2 | 0.4 | 0.2 | -0.6 | -0.2 | 0.2 | 0.7 | 0.3 | -0.2 | 0.2 | 0.0 | 0.9 | -0.4 | |
| ALL GROUPS | 7.67 | 1.7 | 5.1 | -1.1 | -1.3 | -4.3 | 1.6 | 3.6 | 1.6 | 2.0 | -0.5 | 0.3 | 0.8 | 1.0 | 2.4 | 2.4 | 0.5 | 1.7 | 0.9 | 1.9 | -0.1 | 1.3 | -0.9 | 0.1 | 0.0 | 0.6 | 0.3 | -0.3 | -0.6 | -0.1 | 0.7 | -0.3 | |
| Food | 3.37 | 1.5 | 8.3 | 0.3 | -0.1 | 0.5 | 2.1 | 3.6 | -3.2 | 2.3 | -1.2 | 0.2 | 0.3 | 0.2 | 2.0 | 2.2 | 0.8 | 2.3 | - | 4.5 | 0.7 | 0.9 | -1.5 | -0.1 | 0.5 | 1.1 | 0.5 | 0.7 | 0.5 | -0.1 | -0.7 | -0.2 | |
| ATSB ² | 0.32 | 5.0 | -0.1 | - | - | 0.0 | 0.9 | - | 2.2 | -1.1 | - | - | 3.3 | 3.2 | 4.1 | - | 9.9 | - | 4.7 | -1.9 | 2.6 | 1.7 | - | -0.8 | - | -1.7 | - | - | - | - | - | - | |
| Clothing and footwear | 0.31 | 1.0 | 1.4 | 0.1 | - | 0.1 | 1.6 | -0.4 | -5.0 | 0.2 | - | - | 0.1 | - | - | - | - | - | - | - | - | - | - | - | 2.1 | -1.2 | 0.4 | 0.6 | - | -0.2 | - | 0.3 | -0.8 |
| Housing | 0.20 | 0.1 | 5.4 | - | - | 0.5 | - | 1.0 | - | -0.2 | 1.7 | - | - | - | 4.0 | - | - | - | -0.1 | 10.0 | -2.3 | - | - | - | - | 1.8 | - | - | -3.4 | 0.6 | 0.2 | -0.6 | - |
| Fuel, light and water | 0.71 | 5.8 | 1.6 | -15.3 | -17.5 | -23.7 | 12.7 | -3.3 | 6.8 | 6.0 | -1.2 | 2.8 | 10.9 | 12.3 | 2.6 | -0.6 | 1.4 | - | 2.2 | 3.2 | -7.5 | 9.3 | -4.0 | 2.0 | -0.9 | - | - | -0.5 | -8.0 | - | - | - | |
| Services | 1.52 | 1.0 | 4.7 | 0.1 | - | -15.1 | -0.3 | 8.8 | -0.2 | 2.9 | - | 0.0 | - | - | 6.6 | 5.7 | - | 1.3 | 2.3 | -3.1 | 0.3 | 0.3 | 0.0 | - | -1.1 | 0.2 | - | - | -2.4 | -0.1 | -0.1 | -0.9 | |
| Miscellaneous | 1.25 | 0.8 | 0.8 | 0.5 | 0.2 | 0.1 | 0.0 | 1.9 | 17.4 | 0.8 | 0.6 | - | 0.1 | 0.1 | -0.9 | 0.9 | - | 0.1 | - | 0.3 | 0.4 | 0.2 | 0.4 | -0.0 | 0.0 | 0.2 | 0.6 | -2.7 | 1.1 | -0.1 | 6.4 | 0.2 | |
| POHNPEI | | | | | | | | | | | | | | | | | | | | | | | | | | | | | | | | | |
| ALL GROUPS | 41.48 | 3.0 | 7.9 | -0.3 | 2.2 | 1.7 | 0.6 | 1.4 | 0.6 | 3.2 | 0.2 | 0.8 | 1.4 | 0.1 | 3.5 | 2.2 | 0.5 | 1.4 | -0.4 | -0.0 | -0.2 | 0.5 | 1.3 | -0.8 | -0.5 | 1.2 | 0.2 | 0.0 | -1.5 | 0.4 | -0.4 | 0.7 | |
| Domestic items | 13.35 | 1.8 | 4.7 | -1.8 | 2.3 | 0.3 | -0.4 | 2.1 | 0.7 | 3.4 | - | 0.8 | 1.2 | 0.9 | 8.8 | 1.9 | -0.8 | 4.1 | -1.0 | 1.4 | -1.3 | 1.1 | 1.2 | -0.1 | 0.1 | 0.6 | 0.4 | 0.8 | -1.9 | 1.7 | 0.2 | 1.9 | |
| Imported items | 28.13 | 3.6 | 9.4 | 0.3 | 2.2 | 2.3 | 1.0 | 1.1 | 0.5 | 3.1 | 0.3 | 0.8 | 1.5 | -0.3 | 1.1 | 2.4 | 1.1 | 0.1 | -0.1 | -0.7 | 0.4 | 0.3 | 1.4 | -1.2 | -0.8 | 1.4 | 0.1 | -0.4 | -1.3 | -0.2 | -0.6 | 0.1 | |
| ALL GROUPS | 41.48 | 3.0 | 7.9 | -0.3 | 2.2 | 1.7 | 0.6 | 1.4 | 0.6 | 3.2 | 0.2 | 0.8 | 1.4 | 0.1 | 3.5 | 2.2 | 0.5 | 1.4 | -0.4 | -0.0 | -0.2 | 0.5 | 1.3 | -0.8 | -0.5 | 1.2 | 0.2 | 0.0 | -1.5 | 0.4 | -0.4 | 0.7 | |
| Food | 14.54 | 4.1 | 14.6 | 1.6 | 4.8 | 1.2 | 0.5 | 1.4 | 1.0 | 4.3 | -0.3 | 0.3 | 0.5 | -1.4 | 0.1 | 1.8 | 1.5 | -0.6 | 0.1 | -0.4 | 1.1 | 1.0 | 0.7 | -0.8 | -0.8 | 1.9 | -0.1 | 0.3 | -0.1 | -1.1 | -0.8 | -0.1 | |
| ATSB ² | 5.90 | 0.8 | 0.4 | 0.5 | 13.6 | 0.9 | 0.0 | -0.2 | 6.6 | 0.6 | 0.5 | 0.6 | 0.1 | 14.9 | 1.2 | -0.1 | - | -1.6 | -0.2 | 0.0 | 0.8 | -0.0 | -0.9 | 0.2 | -0.3 | -1.1 | 0.4 | 2.2 | 1.2 | 0.8 | - | - | |
| Clothing and footwear | 2.65 | 0.1 | 1.5 | 2.4 | 1.2 | 8.6 | - | 2.5 | 1.5 | 0.1 | 0.3 | 0.0 | 0.5 | 0.0 | 0.0 | 4.8 | 4.4 | 0.1 | -0.0 | -0.6 | -0.3 | 0.4 | -0.0 | -0.2 | -0.9 | -1.8 | 1.7 | 0.8 | 4.5 | 0.6 | 1.2 | 0.5 | |
| Housing | 1.63 | 1.7 | 0.7 | 0.0 | 6.6 | - | 0.0 | 0.5 | - | 0.0 | 0.2 | - | -0.0 | -0.0 | 0.9 | 0.4 | - | 2.1 | 0.1 | -0.9 | - | 0.0 | 1.6 | 0.4 | - | 0.3 | - | 0.5 | - | -0.9 | 4.1 | | |
| Fuel, light and water | 3.92 | 4.5 | 12.6 | -7.2 | -22.4 | 0.8 | 2.0 | 5.8 | 1.7 | 1.9 | 2.3 | 7.5 | 5.3 | 3.9 | 5.6 | 2.7 | -4.2 | 16.0 | -6.1 | 3.3 | -4.7 | 3.9 | 2.6 | -1.4 | -0.1 | 4.1 | - | 1.1 | -19.0 | 6.7 | -1.3 | 4.3 | |
| Services | 6.27 | 2.8 | 5.9 | -3.9 | -2.7 | -0.2 | 0.8 | 1.2 | -0.7 | 2.7 | 0.1 | 0.2 | 1.3 | 0.8 | 4.9 | 3.5 | -0.4 | 1.0 | 1.1 | -0.1 | -1.1 | -0.8 | 0.7 | -1.4 | 0.4 | 1.1 | 1.1 | 1.4 | 0.1 | 0.7 | -0.9 | -0.7 | |
| Miscellaneous | 6.57 | 0.2 | 3.4 | 0.9 | 4.7 | 3.4 | 0.8 | 0.7 | 0.1 | 0.2 | 0.3 | 0.0 | 3.4 | 1.3 | 0.4 | 2.4 | 0.5 | 0.3 | 0.1 | 1.2 | 0.4 | -0.7 | 3.7 | -1.3 | -0.1 | 0.3 | 0.1 | -1.8 | 0.1 | -1.0 | -0.4 | 1.1 | |
| CHUK | | | | | | | | | | | | | | | | | | | | | | | | | | | | | | | | | |
| ALL GROUPS | 32.39 | 1.8 | 13.2 | -1.7 | -1.6 | 0.2 | 1.1 | -0.1 | -2.6 | 0.8 | 5.6 | -2.1 | 1.2 | 1.5 | 3.9 | 1.4 | 1.0 | 1.8 | -0.5 | 1.0 | 0.4 | 0.6 | 0.1 | -0.3 | 0.5 | 0.6 | -0.5 | -0.3 | -1.3 | 0.7 | -0.4 | -0.9 | |
| Domestic items | 4.86 | 0.6 | 0.5 | 1.4 | 0.5 | 0.5 | 0.8 | - | 0.1 | 0.9 | 12.7 | -0.2 | 0.4 | 0.2 | 0.4 | 5.5 | - | 0.1 | 0.7 | 1.8 | 0.3 | 0.6 | -0.1 | 0.2 | -0.3 | -0.1 | 0.7 | -0.0 | -4.5 | -1.7 | 1.9 | 0.5 | |
| Imported items | 27.54 | 2.3 | 15.5 | -2.2 | -2.0 | 0.2 | 1.1 | -0.1 | -3.0 | 0.8 | 4.4 | -2.4 | 1.4 | 1.7 | 4.5 | 0.7 | 1.1 | 2.1 | -0.7 | 0.9 | 0.4 | 0.6 | 0.1 | -0.4 | 0.6 | 0.7 | -0.7 | -0.4 | -0.7 | 1.2 | -0.8 | -1.2 | |
| ALL GROUPS | 32.39 | 1.8 | 13.2 | -1.7 | -1.6 | 0.2 | 1.1 | -0.1 | -2.6 | 0.8 | 5.6 | -2.1 | 1.2 | 1.5 | 3.9 | 1.4 | 1.0 | 1.8 | -0.5 | 1.0 | 0.4 | 0.6 | 0.1 | -0.3 | 0.5 | 0.6 | -0.5 | -0.3 | -1.3 | 0.7 | -0.4 | -0.9 | |
| Food | 14.43 | 2.2 | 21.5 | 1.6 | 0.1 | 0.3 | 1.1 | 0.1 | -5.0 | -0.2 | 0.5 | 1.3 | 1.1 | 3.0 | 3.1 | 0.6 | 1.4 | 2.8 | -0.7 | 1.7 | 0.2 | 0.3 | -0.6 | -0.3 | 1.3 | 0.3 | -0.6 | 0.3 | 1.4 | -1.5 | -2.2 | | |
| ATSB ² | 2.32 | 1.9 | 1.8 | 0.8 | 5.2 | 4.6 | 6.0 | - | -2.0 | - | 42.2 | -24.9 | - | - | 19.3 | 2.2 | 0.1 | 1.9 | - | -1.6 | -0.6 | 1.5 | 2.7 | 0.4 | -0.8 | 0.6 | - | - | -0.2 | 0.2 | 0.7 | - | |
| Clothing and footwear | 1.94 | 0. | | | | | | | | | | | | | | | | | | | | | | | | | | | | | | | |

Table 2: Annual Inflation Rate by State and Commodity Group^a

| | Weight | Q2-08 | Q3-08 | Q4-08 | Q1-09 | Q2-09 | Q3-09 | Q4-09 | Q1-10 | Q2-10 | Q3-10 | Q4-10 | Q1-11 | Q2-11 | Q3-11 | Q4-11 | Q1-12 | Q2-12 | Q3-12 | Q4-12 | Q1-13 | Q2-13 | Q3-13 | Q4-13 | Q1-14 | Q2-14 | Q3-14 | Q4-14 | Q1-15 | Q2-15 | Q3-15 | Q4-15 |
|-----------------------|---------------|------------|-------------|-------------|-------------|-------------|-------------|-------------|-------------|-------------|------------|------------|------------|------------|------------|------------|------------|------------|------------|------------|------------|-------------|------------|------------|------------|-------------|------------|------------|-------------|-------------|-------------|-------------|
| FSM | | | | | | | | | | | | | | | | | | | | | | | | | | | | | | | | |
| ALL GROUPS | 100.00 | 5.3 | 13.0 | 10.6 | 9.2 | 9.5 | 2.1 | 3.6 | 3.4 | 3.5 | 4.3 | 3.2 | 4.5 | 4.0 | 5.4 | 7.6 | 6.7 | 7.1 | 3.8 | 2.5 | 2.5 | 1.6 | 1.9 | 0.9 | 0.7 | 0.8 | 0.5 | 0.9 | -0.5 | -0.7 | -1.0 | -0.9 |
| <i>Domestic items</i> | 23.69 | 3.5 | 4.9 | 1.2 | -0.4 | 6.6 | 4.2 | 7.1 | 6.7 | 4.0 | 6.5 | 5.5 | 6.0 | 6.3 | 9.1 | 11.9 | 9.4 | 10.6 | 6.1 | 4.3 | 5.3 | 2.9 | 2.1 | 1.1 | 1.4 | 0.8 | 1.1 | 1.4 | -1.0 | -0.8 | -0.8 | 0.0 |
| <i>Imported items</i> | 76.31 | 5.9 | 15.6 | 13.4 | 12.5 | 10.4 | 1.5 | 2.6 | 2.4 | 3.4 | 3.7 | 2.5 | 4.0 | 3.3 | 4.3 | 6.3 | 5.9 | 6.0 | 3.1 | 2.0 | 1.7 | 1.2 | 1.9 | 0.8 | 0.5 | 0.8 | 0.3 | 0.7 | -0.3 | -0.6 | -1.0 | -1.3 |
| ALL GROUPS | 100.00 | 5.3 | 13.0 | 10.6 | 9.2 | 9.5 | 2.1 | 3.6 | 3.4 | 3.5 | 4.3 | 3.2 | 4.5 | 4.0 | 5.4 | 7.6 | 6.7 | 7.1 | 3.8 | 2.5 | 2.5 | 1.6 | 1.9 | 0.9 | 0.7 | 0.8 | 0.5 | 0.9 | -0.5 | -0.7 | -1.0 | -0.9 |
| Food | 37.10 | 6.1 | 21.6 | 22.1 | 24.2 | 21.4 | 6.1 | 5.0 | 0.6 | 2.1 | 1.1 | 0.9 | 3.4 | 2.2 | 3.9 | 4.6 | 5.0 | 5.3 | 3.4 | 3.0 | 2.7 | 2.4 | 2.5 | 1.1 | 0.6 | 0.8 | 0.9 | 1.1 | 1.0 | 0.2 | -0.5 | -1.4 |
| ATSB ¹ | 12.17 | 2.5 | 2.1 | 1.5 | 8.1 | 10.1 | 12.3 | 12.8 | 5.5 | 5.9 | 12.3 | 4.8 | 4.6 | 3.4 | 7.1 | 16.0 | 14.8 | 13.1 | 0.8 | -1.5 | -0.4 | -0.2 | 0.4 | 1.2 | 0.7 | 0.4 | 0.3 | 0.0 | 0.2 | 1.5 | 0.9 | 1.7 |
| Clothing and footwear | 5.52 | 2.7 | 3.8 | 4.1 | 4.2 | 8.8 | 8.0 | 7.6 | 7.9 | 3.0 | 3.3 | 1.2 | 1.2 | 2.0 | 1.7 | 4.8 | 6.8 | 6.4 | 5.8 | 2.9 | 0.1 | -0.2 | -0.3 | -0.0 | -0.1 | -0.4 | -0.2 | 0.5 | 2.4 | 6.6 | 6.8 | 8.7 |
| Housing | 3.18 | 3.1 | 3.5 | 3.0 | 6.7 | 5.5 | 4.6 | 4.9 | 1.0 | 1.2 | 1.1 | 1.0 | 0.6 | 0.5 | 2.5 | 3.0 | 3.2 | 4.3 | 3.1 | 1.4 | 1.4 | 0.5 | 0.5 | 2.1 | 2.0 | 1.5 | 0.8 | 0.0 | -0.2 | -0.7 | 0.0 | 2.5 |
| Fuel, light and water | 9.33 | 2.8 | 11.4 | 1.1 | -18.0 | -0.9 | -10.4 | -1.4 | 14.0 | 4.2 | 11.0 | 12.8 | 14.8 | 18.2 | 12.5 | 12.4 | 5.6 | 10.9 | 7.9 | 7.5 | 9.3 | 2.1 | 3.3 | 0.4 | 2.1 | 2.6 | 1.9 | 3.1 | -7.7 | -8.7 | -8.5 | -7.3 |
| Services | 16.89 | 8.3 | 13.7 | 5.6 | -3.0 | -6.9 | -12.5 | -6.6 | 0.7 | 5.7 | 5.0 | 3.2 | 5.2 | 2.5 | 7.1 | 11.1 | 9.0 | 9.5 | 6.1 | 1.8 | 1.8 | 0.8 | 0.6 | 0.4 | 0.3 | 0.4 | 0.2 | 1.1 | -0.4 | -0.7 | -1.0 | -2.0 |
| Miscellaneous | 15.82 | 1.4 | 2.8 | 3.2 | 5.0 | 5.8 | 5.4 | 5.2 | 5.3 | 3.8 | 3.5 | 3.8 | 2.8 | 4.1 | 4.0 | 4.4 | 4.2 | 3.1 | 2.3 | 2.3 | 2.3 | 2.3 | 3.4 | 1.0 | 0.7 | 0.6 | -0.6 | -0.4 | -1.1 | -1.9 | -1.5 | -0.5 |
| KOSRAE | | | | | | | | | | | | | | | | | | | | | | | | | | | | | | | | |
| ALL GROUPS | 7.67 | 8.9 | 11.0 | 7.2 | 4.2 | -2.0 | -5.2 | -0.7 | 2.3 | 9.0 | 6.7 | 3.3 | 2.5 | 1.6 | 4.6 | 6.8 | 6.4 | 7.1 | 5.5 | 5.0 | 4.4 | 4.0 | 2.2 | 0.4 | 0.5 | -0.2 | 1.0 | 0.6 | 0.0 | -0.6 | -0.2 | -0.2 |
| <i>Domestic items</i> | 1.47 | 7.5 | 9.2 | -1.4 | -9.6 | -15.7 | -16.8 | -9.8 | 1.4 | 10.4 | 5.8 | 5.5 | 6.2 | 9.2 | 11.4 | 14.4 | 10.9 | 6.6 | 8.5 | 5.3 | 2.1 | 8.3 | 2.5 | 3.2 | 4.8 | -1.8 | 0.4 | -1.2 | -4.2 | -4.8 | -5.0 | -4.4 |
| <i>Imported items</i> | 6.20 | 9.3 | 11.6 | 9.5 | 7.7 | 1.3 | -2.4 | 1.4 | 2.4 | 8.7 | 6.9 | 2.9 | 1.8 | 0.1 | 3.2 | 5.2 | 5.5 | 7.2 | 4.9 | 5.0 | 4.9 | 3.0 | 2.1 | -0.2 | -0.4 | 0.2 | 1.1 | 1.0 | 1.0 | 0.3 | 0.9 | 0.7 |
| ALL GROUPS | 7.67 | 8.9 | 11.0 | 7.2 | 4.2 | -2.0 | -5.2 | -0.7 | 2.3 | 9.0 | 6.7 | 3.3 | 2.5 | 1.6 | 4.6 | 6.8 | 6.4 | 7.1 | 5.5 | 5.0 | 4.4 | 4.0 | 2.2 | 0.4 | 0.5 | -0.2 | 1.0 | 0.6 | 0.0 | -0.6 | -0.2 | -0.2 |
| Food | 3.37 | 7.2 | 13.8 | 10.5 | 10.2 | 9.1 | 2.8 | 6.2 | 2.8 | 4.7 | 1.4 | -1.9 | 1.6 | -0.5 | 2.8 | 4.9 | 5.4 | 7.6 | 5.4 | 7.8 | 7.7 | 6.3 | 4.7 | 0.1 | -0.2 | 0.0 | 2.1 | 2.9 | 2.8 | 1.6 | 0.3 | -0.6 |
| ATSB ¹ | 0.32 | 43.1 | 34.3 | 22.6 | 5.0 | -0.1 | 0.0 | 0.9 | 0.9 | 3.2 | 2.0 | 1.1 | 1.1 | 2.2 | 6.5 | 10.9 | 10.9 | 18.1 | 14.4 | 15.1 | 12.9 | 5.4 | 7.2 | 2.4 | 3.5 | 0.8 | -2.5 | -2.5 | -1.7 | -1.7 | - | - |
| Clothing and footwear | 0.31 | 6.5 | 7.5 | 3.6 | 2.5 | 1.5 | 0.2 | 1.7 | 1.3 | -3.8 | -3.7 | -5.3 | -4.8 | 0.3 | 0.1 | 0.1 | 0.1 | - | - | - | - | 2.1 | 0.8 | 1.2 | 1.8 | -0.2 | 0.8 | 0.4 | -0.2 | 0.1 | 0.3 | -0.5 |
| Housing | 0.20 | 4.5 | 7.3 | 5.5 | 5.5 | 6.0 | 0.5 | 1.6 | 1.6 | 0.9 | 2.5 | 1.5 | 1.5 | 1.7 | 4.0 | 4.0 | 4.0 | 4.0 | 9.9 | 7.4 | 7.4 | 7.5 | -2.3 | - | 1.8 | 1.8 | 1.8 | -1.7 | -2.8 | -2.6 | -3.2 | 0.2 |
| Fuel, light and water | 0.71 | 15.6 | 17.4 | -8.9 | -24.9 | -45.8 | -39.9 | -31.3 | -11.1 | 23.5 | 8.4 | 15.2 | 19.5 | 26.5 | 31.3 | 27.0 | 16.1 | 3.4 | 3.0 | 7.0 | -2.4 | 6.7 | 0.2 | -1.0 | 6.0 | -3.0 | 1.1 | -1.4 | -8.5 | -8.5 | -8.5 | -8.0 |
| Services | 1.52 | 11.0 | 6.6 | 8.4 | 5.9 | -10.9 | -15.2 | -7.9 | -8.1 | 11.3 | 11.6 | 2.6 | 2.9 | 0.0 | 6.6 | 12.6 | 12.6 | 14.1 | 9.5 | 0.4 | 0.8 | -0.2 | -2.4 | 0.7 | -0.7 | -0.8 | -0.8 | -0.8 | -2.2 | -2.5 | -2.6 | -3.5 |
| Miscellaneous | 1.25 | 1.6 | 2.8 | 2.6 | 2.3 | 1.6 | 0.8 | 2.3 | 19.7 | 20.6 | 21.2 | 18.9 | 1.4 | 0.8 | -0.7 | 0.2 | 0.1 | 0.1 | 1.0 | 0.4 | 0.8 | 0.9 | 1.3 | 0.9 | 0.6 | 0.6 | 0.8 | -1.9 | -0.9 | -1.1 | 4.5 | 7.7 |
| POHNPEI | | | | | | | | | | | | | | | | | | | | | | | | | | | | | | | | |
| ALL GROUPS | 41.48 | 6.5 | 14.0 | 13.0 | 13.2 | 11.8 | 4.2 | 6.0 | 4.3 | 5.8 | 5.5 | 4.8 | 5.7 | 2.5 | 5.8 | 7.4 | 6.4 | 7.7 | 3.7 | 1.4 | 0.8 | -0.1 | 1.6 | 0.8 | 0.5 | 1.2 | 0.1 | 0.9 | -0.1 | -0.8 | -1.4 | -0.7 |
| <i>Domestic items</i> | 13.35 | 7.6 | 12.2 | 10.2 | 7.1 | 5.5 | 0.4 | 4.4 | 2.7 | 5.9 | 6.3 | 4.9 | 5.4 | 2.9 | 11.9 | 13.1 | 10.9 | 14.4 | 4.1 | 3.6 | 3.1 | 0.1 | 2.4 | 0.9 | 2.3 | 1.9 | 1.1 | 2.0 | -0.1 | 1.0 | 0.7 | 1.8 |
| <i>Imported items</i> | 28.13 | 5.9 | 14.8 | 14.0 | 16.2 | 14.7 | 5.9 | 6.7 | 5.0 | 5.8 | 5.1 | 4.8 | 5.8 | 2.4 | 3.2 | 4.9 | 4.4 | 4.8 | 3.5 | 0.4 | -0.3 | -0.2 | 1.3 | 0.8 | -0.3 | 0.9 | -0.5 | 0.4 | -0.1 | -1.7 | -2.4 | -1.9 |
| ALL GROUPS | 41.48 | 6.5 | 14.0 | 13.0 | 13.2 | 11.8 | 4.2 | 6.0 | 4.3 | 5.8 | 5.5 | 4.8 | 5.7 | 2.5 | 5.8 | 7.4 | 6.4 | 7.7 | 3.7 | 1.4 | 0.8 | -0.1 | 1.6 | 0.8 | 0.5 | 1.2 | 0.1 | 0.9 | -0.1 | -0.8 | -1.4 | -0.7 |
| Food | 14.54 | 7.7 | 21.8 | 22.5 | 27.0 | 23.4 | 8.3 | 8.1 | 4.3 | 7.5 | 6.6 | 5.4 | 4.8 | -1.0 | -0.5 | 1.0 | 2.0 | 2.9 | 2.9 | 0.6 | 0.1 | 1.7 | 2.3 | 2.0 | 0.0 | 0.9 | 0.2 | 1.3 | 2.1 | -0.9 | -1.6 | -2.1 |
| ATSB ¹ | 5.90 | 2.3 | 2.7 | 3.3 | 15.6 | 15.6 | 15.2 | 14.4 | 0.9 | 6.6 | 7.3 | 8.1 | 8.5 | 1.8 | 16.2 | 16.9 | 16.2 | 16.1 | 1.1 | -1.7 | -1.8 | -1.8 | -1.0 | 0.6 | -0.0 | 0.1 | -1.0 | -2.1 | -0.8 | 1.1 | 2.7 | 4.6 |
| Clothing and footwear | 2.65 | 1.0 | 1.5 | 3.9 | 5.1 | 14.1 | 12.4 | 12.6 | 13.0 | 4.1 | 4.5 | 1.9 | 0.9 | 0.9 | 0.5 | 5.3 | 9.4 | 9.6 | 9.5 | 3.9 | -0.8 | -0.5 | -0.6 | -0.2 | -0.8 | -2.9 | -1.3 | -0.3 | 5.2 | 7.8 | 7.2 | 6.9 |
| Housing | 1.63 | 3.3 | 3.2 | 2.2 | 9.2 | 7.4 | 6.6 | 7.1 | 0.5 | 0.6 | 0.8 | 0.3 | 0.2 | 0.2 | 0.8 | 1.2 | 1.3 | 3.3 | 2.5 | 1.2 | 1.2 | -0.8 | 0.7 | 2.0 | 2.0 | 2.4 | 0.7 | 0.3 | 0.8 | 0.5 | -0.4 | 3.7 |
| Fuel, light and water | 3.92 | 16.8 | 31.5 | 23.0 | -15.2 | -18.3 | -25.9 | -15.6 | 10.6 | 11.8 | 12.1 | 13.9 | 18.0 | 20.3 | 24.2 | 18.7 | 8.0 | 20.6 | 7.2 | 7.7 | 7.3 | -3.9 | 4.9 | 0.2 | 5.0 | 5.2 | 2.5 | 5.1 | -14.8 | -12.6 | -13.7 | -11.0 |
| Services | 6.27 | 5.6 | 11.1 | 5.4 | 1.8 | -1.2 | -5.9 | -1.0 | 1.1 | 4.1 | 3.4 | 2.3 | 4.4 | 2.4 | 7.4 | 10.9 | 9.0 | 9.1 | 5.2 | 1.5 | 0.8 | -1.0 | -1.4 | -2.6 | -1.2 | 0.7 | 1.1 | 4.0 | 3.7 | 3.4 | 1.4 | -0.8 |
| Miscellaneous | 6.57 | 0.1 | 3.4 | 4.6 | 9.4 | 12.9 | 10.2 | 9.9 | 5.1 | 1.8 | 1.3 | 0.6 | 3.9 | 5.1 | 5.2 | 7.6 | 4.7 | 3.7 | 3.3 | 2.2 | 2.0 | 1.0 | 4.7 | 2.1 | 1.5 | 2.5 | -1.1 | -1.6 | -1.4 | -2.7 | -3.2 | -0.3 |
| CHUUK | | | | | | | | | | | | | | | | | | | | | | | | | | | | | | | | |
| ALL GROUPS | 32.39 | 5.3 | 18.6 | 14.1 | 11.5 | 9.7 | -2.1 | -0.5 | -1.4 | -0.9 | 3.6 | 1.5 | 5.5 | 6.2 | 4.5 | 8.2 | 8.0 | 8.3 | 3.8 | 3.4 | 2.7 | 1.5 | 2.1 | 0.8 | 0.9 | 0.8 | 0.3 | 0.3 | -1.5 | -1.4 | -1.3 | -1.9 |
| <i>Domestic items</i> | 4.86 | 4.2 | 4.8 | 2.6 | 3.0 | 2.9 | 3.2 | 1.8 | 1.3 | 1.8 | 13.8 | 13.7 | 13.9 | 13.1 | 0.8 | 6.6 | 6.2 | 6.1 | 6.4 | 2.6 | 2.9 | 3.4 | 2.6 | 1.0 | 0.4 | -0.3 | 0.5 | 0.3 | -4.0 | -5.5 | -4.4 | -3.9</ |

Table 3: 12 – Month Average CPI Inflation Rate by State and Commodity Group

| | Weight | Q2-08 | Q3-08 | Q4-08 | Q1-09 | Q2-09 | Q3-09 | Q4-09 | Q1-10 | Q2-10 | Q3-10 | Q4-10 | Q1-11 | Q2-11 | Q3-11 | Q4-11 | Q1-12 | Q2-12 | Q3-12 | Q4-12 | Q1-13 | Q2-13 | Q3-13 | Q4-13 | Q1-14 | Q2-14 | Q3-14 | Q4-14 | Q1-15 | Q2-15 | Q3-15 | Q4-15 |
|----------------------|--------|-------|-------|-------|-------|-------|-------|-------|-------|-------|-------|-------|-------|-------|-------|-------|-------|-------|-------|-------|-------|-------|-------|-------|-------|-------|-------|-------|-------|-------|-------|-------|
| FSM | | | | | | | | | | | | | | | | | | | | | | | | | | | | | | | | |
| ALL GROUPS | 100.00 | 3.9 | 6.6 | 8.3 | 9.5 | 10.5 | 7.7 | 5.9 | 4.5 | 3.2 | 3.7 | 3.6 | 3.9 | 4.0 | 4.3 | 5.4 | 5.9 | 6.7 | 6.3 | 5.0 | 4.0 | 2.6 | 2.1 | 1.7 | 1.3 | 1.1 | 0.7 | 0.7 | 0.4 | 0.1 | -0.3 | -0.8 |
| Domestic items | 23.69 | 5.0 | 5.2 | 4.0 | 2.3 | 3.1 | 2.9 | 4.4 | 6.1 | 5.5 | 6.1 | 5.7 | 5.5 | 6.1 | 6.7 | 8.4 | 9.2 | 10.2 | 9.4 | 7.5 | 6.5 | 4.6 | 3.6 | 2.8 | 1.9 | 1.3 | 1.1 | 1.2 | 0.6 | 0.2 | -0.3 | -0.6 |
| Imported items | 76.31 | 3.5 | 7.0 | 9.6 | 11.9 | 13.0 | 9.2 | 6.5 | 4.1 | 2.5 | 3.0 | 3.0 | 3.4 | 3.4 | 3.5 | 4.5 | 5.0 | 5.6 | 5.3 | 4.2 | 3.2 | 2.0 | 1.7 | 1.4 | 1.1 | 1.0 | 0.6 | 0.6 | 0.4 | 0.0 | -0.3 | -0.8 |
| ALL GROUPS | 100.00 | 3.9 | 6.6 | 8.3 | 9.5 | 10.5 | 7.7 | 5.9 | 4.5 | 3.2 | 3.7 | 3.6 | 3.9 | 4.0 | 4.3 | 5.4 | 5.9 | 6.7 | 6.3 | 5.0 | 4.0 | 2.6 | 2.1 | 1.7 | 1.3 | 1.1 | 0.7 | 0.7 | 0.4 | 0.1 | -0.3 | -0.8 |
| Food | 37.10 | 3.5 | 8.5 | 13.4 | 18.6 | 22.3 | 17.9 | 13.4 | 7.7 | 3.4 | 2.2 | 1.2 | 1.9 | 1.9 | 2.6 | 3.5 | 3.9 | 4.7 | 4.5 | 4.1 | 3.6 | 2.9 | 2.6 | 2.2 | 1.6 | 1.2 | 0.8 | 0.8 | 0.9 | 0.8 | 0.5 | -0.2 |
| ATSB ¹ | 12.17 | 0.7 | 1.3 | 1.8 | 3.6 | 5.5 | 8.1 | 10.8 | 10.1 | 9.0 | 9.1 | 7.2 | 6.9 | 6.3 | 5.1 | 7.8 | 10.3 | 12.7 | 10.8 | 6.4 | 2.7 | -0.3 | -0.4 | 0.2 | 0.5 | 0.7 | 0.6 | 0.4 | 0.2 | 0.5 | 0.7 | 1.1 |
| Clothing and footw | 5.52 | 2.1 | 2.7 | 3.3 | 3.7 | 5.2 | 6.3 | 7.2 | 8.1 | 6.6 | 5.4 | 3.8 | 2.2 | 1.9 | 1.5 | 2.4 | 3.8 | 4.9 | 6.0 | 5.5 | 3.8 | 2.1 | 0.6 | -0.1 | -0.1 | -0.2 | -0.2 | -0.1 | 0.6 | 2.3 | 4.1 | 6.1 |
| Housing | 3.18 | 1.9 | 2.4 | 2.9 | 4.1 | 4.7 | 4.9 | 5.4 | 3.9 | 2.9 | 2.0 | 1.1 | 1.0 | 0.8 | 1.2 | 1.7 | 2.3 | 3.3 | 3.4 | 3.0 | 2.6 | 1.6 | 1.0 | 1.1 | 1.3 | 1.5 | 1.6 | 1.1 | 0.5 | -0.0 | -0.2 | 0.4 |
| Fuel, light and wate | 9.33 | 9.8 | 10.1 | 7.3 | -1.1 | -1.9 | -7.3 | -7.9 | -0.4 | 0.9 | 6.7 | 10.4 | 10.7 | 14.2 | 14.5 | 14.4 | 12.0 | 10.3 | 9.2 | 8.0 | 8.9 | 6.6 | 5.5 | 3.7 | 2.0 | 2.1 | 1.8 | 2.4 | -0.0 | -2.9 | -5.5 | -8.1 |
| Services | 16.89 | 5.8 | 8.5 | 8.4 | 6.1 | 2.2 | -4.4 | -7.4 | -6.5 | -3.5 | 1.0 | 3.7 | 4.8 | 3.9 | 4.5 | 6.5 | 7.4 | 9.2 | 8.9 | 6.5 | 4.7 | 2.6 | 1.2 | 0.9 | 0.5 | 0.4 | 0.4 | 0.5 | 0.3 | 0.0 | -0.3 | -1.1 |
| Miscellaneous | 15.82 | 0.9 | 1.4 | 2.1 | 3.1 | 4.2 | 4.9 | 5.4 | 5.5 | 4.9 | 4.5 | 4.1 | 3.5 | 3.5 | 3.7 | 3.8 | 4.2 | 3.9 | 3.5 | 3.0 | 2.5 | 2.3 | 2.6 | 2.3 | 1.9 | 1.4 | 0.4 | 0.0 | -0.4 | -1.0 | -1.2 | -1.2 |
| KOSRAE | | | | | | | | | | | | | | | | | | | | | | | | | | | | | | | | |
| ALL GROUPS | 7.67 | 6.6 | 8.4 | 8.7 | 7.8 | 5.0 | 0.9 | -1.0 | -1.4 | 1.2 | 4.3 | 5.3 | 5.3 | 3.5 | 3.0 | 3.9 | 4.8 | 6.2 | 6.5 | 6.0 | 5.5 | 4.7 | 3.9 | 2.7 | 1.8 | 0.7 | 0.4 | 0.5 | 0.4 | 0.3 | -0.0 | -0.3 |
| Domestic items | 1.47 | 7.3 | 8.5 | 5.9 | 1.3 | -4.5 | -11.0 | -13.0 | -10.6 | -4.6 | 1.5 | 5.7 | 6.9 | 6.7 | 8.1 | 10.3 | 11.5 | 10.7 | 10.0 | 7.8 | 5.6 | 6.0 | 4.5 | 4.0 | 4.6 | 2.1 | 1.6 | 0.5 | -1.7 | -2.4 | -3.8 | -4.6 |
| Imported items | 6.20 | 6.4 | 8.4 | 9.4 | 9.5 | 7.4 | 3.9 | 1.9 | 0.7 | 2.5 | 4.8 | 5.2 | 5.0 | 2.9 | 2.0 | 2.6 | 3.5 | 5.3 | 5.7 | 5.6 | 5.5 | 4.4 | 3.7 | 2.4 | 1.1 | 0.4 | 0.2 | 0.5 | 0.8 | 0.9 | 0.8 | 0.7 |
| ALL GROUPS | 7.67 | 6.6 | 8.4 | 8.7 | 7.8 | 5.0 | 0.9 | -1.0 | -1.4 | 1.2 | 4.3 | 5.3 | 5.3 | 3.5 | 3.0 | 3.9 | 4.8 | 6.2 | 6.5 | 6.0 | 5.5 | 4.7 | 3.9 | 2.7 | 1.8 | 0.7 | 0.4 | 0.5 | 0.4 | 0.3 | -0.0 | -0.3 |
| Food | 3.37 | 6.1 | 8.6 | 9.5 | 10.4 | 10.9 | 8.0 | 6.9 | 5.1 | 4.1 | 3.8 | 1.7 | 1.4 | 0.1 | 0.5 | 2.2 | 3.2 | 5.2 | 5.8 | 6.6 | 7.1 | 6.8 | 6.6 | 4.6 | 2.6 | 1.1 | 0.5 | 1.2 | 1.9 | 2.3 | 1.9 | 1.0 |
| ATSB ¹ | 0.32 | 26.7 | 33.2 | 33.7 | 24.5 | 13.8 | 6.1 | 1.4 | 0.5 | 1.3 | 1.8 | 1.8 | 1.8 | 1.6 | 2.7 | 5.2 | 7.6 | 11.7 | 13.6 | 14.7 | 15.1 | 11.8 | 9.9 | 6.8 | 4.6 | 3.4 | 1.0 | -0.2 | -1.5 | -2.1 | -1.5 | -0.8 |
| Clothing and footw | 0.31 | 4.5 | 6.1 | 5.8 | 5.0 | 3.7 | 1.9 | 1.5 | 1.2 | -0.2 | -1.1 | -2.9 | -4.4 | -3.4 | -2.5 | -1.2 | 0.1 | 0.0 | 0.0 | 0.0 | - | 0.5 | 0.7 | 1.0 | 1.5 | 0.9 | 0.9 | 0.7 | 0.2 | 0.3 | 0.2 | -0.1 |
| Housing | 0.20 | 4.2 | 5.3 | 5.5 | 5.7 | 6.1 | 4.3 | 3.3 | 2.4 | 1.1 | 1.6 | 1.6 | 1.6 | 1.8 | 2.2 | 2.8 | 3.4 | 4.0 | 5.5 | 6.4 | 7.2 | 8.1 | 4.8 | 3.0 | 1.6 | 0.3 | 1.3 | 0.9 | -0.3 | -1.4 | -2.6 | -2.1 |
| Fuel, light and wate | 0.71 | 10.1 | 13.9 | 8.4 | -0.9 | -16.7 | -30.3 | -35.8 | -33.8 | -20.0 | -6.2 | 7.7 | 16.5 | 17.6 | 23.4 | 26.2 | 24.9 | 18.4 | 11.4 | 7.1 | 2.7 | 3.6 | 2.8 | 0.9 | 2.9 | 0.5 | 0.7 | 0.6 | -2.9 | -4.3 | -6.7 | -8.3 |
| Services | 1.52 | 8.6 | 8.6 | 9.0 | 7.9 | 2.4 | -3.2 | -7.2 | -10.5 | -5.6 | 0.9 | 3.8 | 6.9 | 4.1 | 3.0 | 5.5 | 7.9 | 11.5 | 12.2 | 8.9 | 5.9 | 2.5 | -0.4 | -0.3 | -0.7 | -0.8 | -0.4 | -0.8 | -1.2 | -1.6 | -2.0 | -2.7 |
| Miscellaneous | 1.25 | 0.9 | 1.5 | 2.0 | 2.3 | 2.3 | 1.8 | 1.7 | 6.1 | 10.9 | 16.0 | 20.1 | 14.9 | 9.8 | 4.5 | 0.4 | 0.1 | -0.1 | 0.4 | 0.4 | 0.6 | 0.8 | 0.8 | 1.0 | 0.9 | 0.8 | 0.7 | 0.0 | -0.3 | -0.8 | 0.2 | 2.5 |
| POHNPEI | | | | | | | | | | | | | | | | | | | | | | | | | | | | | | | | |
| ALL GROUPS | 41.48 | 3.5 | 6.5 | 9.2 | 11.7 | 13.0 | 10.4 | 8.6 | 6.4 | 5.1 | 5.4 | 5.1 | 5.5 | 4.6 | 4.7 | 5.4 | 5.5 | 6.8 | 6.3 | 4.8 | 3.4 | 1.4 | 0.9 | 0.8 | 0.7 | 1.1 | 0.7 | 0.7 | 0.5 | -0.0 | -0.4 | -0.8 |
| Domestic items | 13.35 | 6.0 | 7.9 | 9.4 | 9.2 | 8.7 | 5.6 | 4.3 | 3.2 | 3.4 | 4.8 | 5.0 | 5.6 | 4.9 | 6.3 | 8.4 | 9.7 | 12.6 | 10.5 | 8.0 | 6.1 | 2.7 | 2.3 | 1.6 | 1.4 | 1.9 | 1.6 | 1.8 | 1.2 | 1.0 | 0.9 | 0.8 |
| Imported items | 28.13 | 2.4 | 5.7 | 9.1 | 12.8 | 14.9 | 12.5 | 10.6 | 7.9 | 5.8 | 5.6 | 5.2 | 5.4 | 4.5 | 4.0 | 4.1 | 3.7 | 4.3 | 4.4 | 3.3 | 2.1 | 0.8 | 0.3 | 0.4 | 0.4 | 0.7 | 0.2 | 0.1 | 0.2 | -0.5 | -1.0 | -1.6 |
| ALL GROUPS | 41.48 | 3.5 | 6.5 | 9.2 | 11.7 | 13.0 | 10.4 | 8.6 | 6.4 | 5.1 | 5.4 | 5.1 | 5.5 | 4.6 | 4.7 | 5.4 | 5.5 | 6.8 | 6.3 | 4.8 | 3.4 | 1.4 | 0.9 | 0.8 | 0.7 | 1.1 | 0.7 | 0.7 | 0.5 | -0.0 | -0.4 | -0.8 |
| Food | 14.54 | 3.2 | 8.1 | 13.6 | 19.8 | 23.7 | 19.8 | 16.0 | 10.5 | 7.0 | 6.6 | 6.0 | 6.1 | 3.9 | 2.1 | 1.1 | 0.4 | 1.4 | 2.2 | 2.1 | 1.6 | 1.3 | 1.2 | 1.5 | 1.5 | 1.3 | 0.8 | 0.6 | 1.1 | 0.7 | 0.2 | -0.6 |
| ATSB ¹ | 5.90 | 0.3 | 1.3 | 2.3 | 6.0 | 9.4 | 12.5 | 15.2 | 11.1 | 8.9 | 7.1 | 5.7 | 7.6 | 6.4 | 8.7 | 10.9 | 12.8 | 16.4 | 12.2 | 7.3 | 3.0 | -1.0 | -1.6 | -1.0 | -0.6 | -0.1 | -0.1 | -0.8 | -1.0 | -0.7 | 0.2 | 1.9 |
| Clothing and footw | 2.65 | 1.3 | 1.1 | 1.8 | 2.9 | 6.2 | 8.9 | 11.1 | 13.0 | 10.4 | 8.4 | 5.7 | 2.8 | 2.0 | 1.0 | 1.9 | 4.0 | 6.2 | 8.5 | 8.0 | 5.4 | 2.9 | 0.5 | -0.5 | -0.5 | -1.1 | -1.3 | -1.3 | 0.2 | 2.8 | 5.0 | 6.8 |
| Housing | 1.63 | 1.9 | 2.5 | 2.6 | 4.5 | 5.5 | 6.4 | 7.6 | 5.3 | 3.6 | 2.2 | 0.5 | 0.5 | 0.4 | 0.4 | 0.6 | 0.9 | 1.7 | 2.1 | 2.1 | 2.1 | 1.0 | 0.6 | 0.8 | 1.0 | 1.8 | 1.8 | 1.4 | 1.0 | 0.6 | 0.3 | 1.1 |
| Fuel, light and wate | 3.92 | 14.1 | 18.9 | 21.7 | 13.2 | 3.7 | -10.8 | -19.0 | -13.9 | -7.2 | 3.4 | 12.1 | 14.0 | 16.2 | 19.2 | 20.3 | 17.5 | 17.7 | 13.5 | 10.8 | 10.6 | 4.3 | 3.8 | 1.9 | 1.4 | 3.8 | 3.2 | 4.4 | -0.5 | -5.0 | -9.1 | -13.0 |
| Services | 6.27 | 3.4 | 5.8 | 6.4 | 5.9 | 4.2 | -0.1 | -1.7 | -1.8 | -0.5 | 1.9 | 2.7 | 3.6 | 3.1 | 4.2 | 6.3 | 7.4 | 9.1 | 8.5 | 6.1 | 4.0 | 1.6 | -0.0 | -1.0 | -1.5 | -1.1 | -0.5 | 1.1 | 2.4 | 3.0 | 3.1 | 1.9 |
| Miscellaneous | 6.57 | -0.1 | 0.8 | 2.0 | 4.4 | 7.6 | 9.3 | 10.6 | 9.5 | 6.6 | 4.4 | 2.2 | 1.9 | 2.7 | 3.7 | 5.4 | 5.6 | 5.3 | 4.8 | 3.4 | 2.8 | 2.1 | 2.5 | 2.5 | 2.3 | 2.7 | 1.2 | 0.3 | -0.4 | -1.7 | -2.2 | -1.9 |
| CHUUK | | | | | | | | | | | | | | | | | | | | | | | | | | | | | | | | |
| ALL GROUPS | 32.39 | 3.9 | 8.1 | 10.6 | 12.4 | 13.4 | 7.9 | 4.3 | 1.2 | -1.2 | 0.2 | 0.7 | 2.4 | 4.2 | 4.4 | 6.1 | 6.7 | 7.3 | 7.0 | 5.8 | 4.5 | 2.8 | 2.4 | 1.8 | 1.3 | 1.1 | 0.7 | 0.6 | -0.0 | -0.6 | -1.0 | -1.5 |
| Domestic items | 4.86 | 4.5 | 4.8 | 3.9 | 3.6 | 3.3 | 2.9 | 2.7 | 2.3 | 2.0 | 4.7 | 7.7 | 10.8 | 13.6 | 10.1 | 8.3 | 6.5 | 4.9 | 6.3 | 5.3 | 4.5 | 3.8 | 2.9 | 2.5 | 1.8 | 0.9 | 0.4 | 0.2 | -0.9 | -2.2 | -3.4 | -4.4 |
| Imported items | 27.54 | 3.8 | 8.8 | 11.8 | 14.0 | 15.2 | 8.8 | 4.6 | 1.0 | -1.7 | -0.5 | -0.4 | 1.0 | 2.6 | 3.5 | 5.7 | 6.8 | 7.7 | 7.2 | 5.9 | 4.5 | 2.7 | 2.3 | 1.6 | 1.2 | 1.2 | 0.7 | 0.6 | 0.1 | -0.3 | -0.6 | -1.0 |
| ALL GROUPS | 32.39 | 3.9 | 8.1 | 10.6 | 12.4 | 13.4 | 7.9 | 4.3 | 1.2 | -1.2 | 0.2 | 0.7 | 2.4 | 4.2 | 4.4 | 6.1 | 6.7 | 7.3 | 7.0 | 5.8 | 4.5 | 2.8 | 2.4 | 1.8 | 1.3 | 1.1 | 0.7 | 0.6 | -0.0 | -0.6 | -1.0 | -1.5 |
| Food | 14.43 | 2.8 | 9.4 | 15.4 | 21.1 | 25.8 | 19.0 | 12.5 | 5.4 | -0.8 | -2.7 | -4.0 | -2.4 | 0.1 | 3.5 | 6.4 | 7.8 | 8.3 | 7.1 | 6.3 | 5.3 | 3.7 | 3.1 | 1.7 | 0.9 | 0.7 | 0.4 | 0.6 | 0.3 | 0.3 | 0.0 | -0.6 |
| ATSB ¹ | 2.32 | | | | | | | | | | | | | | | | | | | | | | | | | | | | | | | |

Table 4: CPI Index by State and Commodity Group

| | Weight | Q2-08 | Q3-08 | Q4-08 | Q1-09 | Q2-09 | Q3-09 | Q4-09 | Q1-10 | Q2-10 | Q3-10 | Q4-10 | Q1-11 | Q2-11 | Q3-11 | Q4-11 | Q1-12 | Q2-12 | Q3-12 | Q4-12 | Q1-13 | Q2-13 | Q3-13 | Q4-13 | Q1-14 | Q2-14 | Q3-14 | Q4-14 | Q1-15 | Q2-15 | Q3-15 | Q4-15 | |
|-----------------------|---------------|--------------|--------------|--------------|--------------|--------------|--------------|--------------|--------------|--------------|--------------|--------------|--------------|--------------|--------------|--------------|--------------|--------------|--------------|--------------|--------------|--------------|--------------|--------------|--------------|--------------|--------------|--------------|--------------|--------------|--------------|--------------|-------|
| FSM | | | | | | | | | | | | | | | | | | | | | | | | | | | | | | | | | |
| ALL GROUPS | 100.00 | 100.0 | 108.3 | 107.7 | 107.7 | 109.5 | 110.6 | 111.5 | 111.4 | 113.4 | 115.4 | 115.1 | 116.3 | 117.9 | 121.7 | 123.8 | 124.2 | 126.3 | 126.3 | 126.9 | 127.3 | 128.3 | 128.8 | 128.1 | 128.3 | 129.3 | 129.4 | 129.2 | 127.7 | 128.4 | 128.2 | 128.0 | |
| <i>Domestic items</i> | 23.69 | 100.0 | 102.4 | 100.6 | 101.5 | 106.6 | 106.8 | 107.7 | 108.3 | 110.9 | 113.7 | 113.6 | 114.8 | 117.8 | 124.1 | 127.2 | 125.6 | 130.3 | 131.6 | 132.7 | 132.3 | 134.1 | 134.3 | 134.1 | 134.2 | 135.2 | 135.7 | 136.0 | 132.8 | 134.2 | 134.7 | 136.0 | |
| <i>Imported items</i> | 76.31 | 100.0 | 110.2 | 109.9 | 109.6 | 110.4 | 111.8 | 112.7 | 112.3 | 114.2 | 115.9 | 115.5 | 116.8 | 117.9 | 120.9 | 122.8 | 123.8 | 125.0 | 124.7 | 125.2 | 125.8 | 126.5 | 127.1 | 126.2 | 126.4 | 127.5 | 127.5 | 127.1 | 126.1 | 126.7 | 126.2 | 125.5 | |
| ALL GROUPS | 100.00 | 100.0 | 108.3 | 107.7 | 107.7 | 109.5 | 110.6 | 111.5 | 111.4 | 113.4 | 115.4 | 115.1 | 116.3 | 117.9 | 121.7 | 123.8 | 124.2 | 126.3 | 126.3 | 126.9 | 127.3 | 128.3 | 128.8 | 128.1 | 128.3 | 129.3 | 129.4 | 129.2 | 127.7 | 128.4 | 128.2 | 128.0 | |
| Food | 37.10 | 100.0 | 115.5 | 117.9 | 120.9 | 121.4 | 122.6 | 123.7 | 121.6 | 123.9 | 123.9 | 124.9 | 125.7 | 126.6 | 128.8 | 130.6 | 132.0 | 133.3 | 133.1 | 134.6 | 135.5 | 136.5 | 136.4 | 136.0 | 136.3 | 137.7 | 137.5 | 137.5 | 137.6 | 138.0 | 136.9 | 135.5 | |
| ATSB ¹ | 12.17 | 100.0 | 99.8 | 98.9 | 106.5 | 110.1 | 112.1 | 111.5 | 112.3 | 116.6 | 125.9 | 116.9 | 117.5 | 120.6 | 134.9 | 135.7 | 135.0 | 136.4 | 136.0 | 133.7 | 134.4 | 136.1 | 136.5 | 135.3 | 135.4 | 136.6 | 136.9 | 135.4 | 135.7 | 138.6 | 138.2 | 137.7 | |
| Clothing and footwear | 5.52 | 100.0 | 101.5 | 103.2 | 104.0 | 108.8 | 109.7 | 111.1 | 112.2 | 112.1 | 113.3 | 112.4 | 113.5 | 114.4 | 115.2 | 117.8 | 121.3 | 121.7 | 121.9 | 121.2 | 121.4 | 121.5 | 121.6 | 121.2 | 121.4 | 120.9 | 121.3 | 121.8 | 124.3 | 128.9 | 129.5 | 132.3 | |
| Housing | 3.18 | 100.0 | 100.9 | 101.2 | 105.5 | 105.5 | 105.5 | 106.1 | 106.5 | 106.8 | 106.7 | 107.2 | 107.2 | 107.3 | 109.3 | 110.4 | 110.6 | 111.9 | 112.8 | 112.0 | 112.2 | 112.5 | 113.3 | 114.3 | 114.4 | 114.2 | 114.2 | 114.3 | 114.2 | 113.4 | 114.3 | 117.2 | |
| Fuel, light and water | 9.33 | 100.0 | 111.7 | 102.6 | 89.6 | 99.1 | 100.1 | 101.1 | 102.1 | 103.2 | 111.1 | 114.0 | 117.2 | 122.0 | 125.0 | 128.2 | 123.8 | 135.3 | 134.8 | 137.8 | 135.3 | 138.2 | 139.3 | 138.3 | 138.2 | 141.8 | 142.0 | 142.6 | 127.5 | 129.5 | 130.0 | 132.1 | |
| Services | 16.89 | 100.0 | 106.6 | 101.9 | 94.2 | 93.1 | 93.4 | 95.1 | 94.9 | 98.5 | 98.0 | 98.2 | 99.9 | 100.9 | 105.0 | 109.1 | 108.9 | 110.5 | 111.4 | 111.0 | 110.8 | 111.4 | 112.0 | 111.5 | 111.2 | 111.8 | 112.2 | 112.7 | 110.7 | 111.0 | 111.1 | 110.5 | |
| Miscellaneous | 15.82 | 100.0 | 101.9 | 102.4 | 104.6 | 105.8 | 107.4 | 107.8 | 110.2 | 109.9 | 111.1 | 111.8 | 113.3 | 114.4 | 115.5 | 116.8 | 118.0 | 118.0 | 118.2 | 119.5 | 120.7 | 120.8 | 122.3 | 120.7 | 121.5 | 121.4 | 121.5 | 120.2 | 120.2 | 119.1 | 119.7 | 119.6 | |
| KOSRAE | | | | | | | | | | | | | | | | | | | | | | | | | | | | | | | | | |
| ALL GROUPS | 7.67 | 100.0 | 105.1 | 103.9 | 102.5 | 98.0 | 99.6 | 103.2 | 104.8 | 106.9 | 106.3 | 106.6 | 107.5 | 108.6 | 111.2 | 113.8 | 114.4 | 116.3 | 117.3 | 119.5 | 119.4 | 120.9 | 119.9 | 120.0 | 120.0 | 120.7 | 121.1 | 120.7 | 120.1 | 120.0 | 120.8 | 120.5 | |
| <i>Domestic items</i> | 1.47 | 100.0 | 105.4 | 98.3 | 90.2 | 84.3 | 87.6 | 88.7 | 91.5 | 93.1 | 92.7 | 93.6 | 97.2 | 101.6 | 103.2 | 107.0 | 107.7 | 108.4 | 112.0 | 112.7 | 109.9 | 117.3 | 114.8 | 116.2 | 115.2 | 115.2 | 115.3 | 114.9 | 110.3 | 109.7 | 109.6 | 109.8 | |
| <i>Imported items</i> | 6.20 | 100.0 | 105.0 | 105.2 | 105.4 | 101.3 | 102.5 | 106.6 | 108.0 | 110.2 | 106.6 | 109.7 | 109.9 | 110.2 | 113.1 | 115.4 | 116.0 | 118.2 | 118.6 | 121.2 | 121.6 | 121.8 | 121.1 | 120.9 | 121.2 | 122.0 | 122.4 | 122.2 | 122.4 | 122.4 | 123.5 | 123.0 | |
| ALL GROUPS | 7.67 | 100.0 | 105.1 | 103.9 | 102.5 | 98.0 | 99.6 | 103.2 | 104.8 | 106.9 | 106.3 | 106.6 | 107.5 | 108.6 | 111.2 | 113.8 | 114.4 | 116.3 | 117.3 | 119.5 | 119.4 | 120.9 | 119.9 | 120.0 | 120.0 | 120.7 | 121.1 | 120.7 | 120.1 | 120.0 | 120.8 | 120.5 | |
| Food | 3.37 | 100.0 | 108.3 | 108.6 | 108.6 | 109.1 | 111.3 | 115.3 | 111.7 | 114.2 | 112.9 | 113.1 | 113.5 | 113.7 | 116.0 | 118.6 | 119.6 | 122.4 | 122.4 | 127.9 | 128.8 | 130.0 | 128.1 | 128.0 | 128.6 | 130.1 | 130.7 | 131.6 | 132.3 | 132.1 | 131.2 | 130.9 | |
| ATSB ¹ | 0.32 | 100.0 | 99.9 | 99.9 | 99.9 | 99.9 | 100.0 | 100.8 | 100.8 | 103.1 | 102.0 | 102.0 | 102.0 | 105.3 | 108.6 | 113.1 | 113.1 | 124.3 | 124.3 | 130.1 | 127.7 | 131.0 | 133.2 | 133.2 | 132.1 | 132.1 | 129.9 | 129.9 | 129.9 | 129.9 | 129.9 | 129.9 | |
| Clothing and footwear | 0.31 | 100.0 | 101.4 | 101.5 | 101.5 | 101.5 | 101.6 | 103.2 | 102.8 | 97.6 | 97.8 | 97.8 | 97.8 | 97.9 | 97.9 | 97.9 | 97.9 | 97.9 | 97.9 | 97.9 | 97.9 | 99.9 | 99.9 | 98.7 | 99.0 | 99.6 | 99.5 | 99.5 | 99.5 | 99.8 | 99.8 | 99.0 | |
| Housing | 0.20 | 100.0 | 105.4 | 105.4 | 105.4 | 106.0 | 106.0 | 107.1 | 107.1 | 106.9 | 108.7 | 108.7 | 108.7 | 108.7 | 113.1 | 113.1 | 113.1 | 113.0 | 124.3 | 121.5 | 121.5 | 121.5 | 121.5 | 121.5 | 121.5 | 123.6 | 123.6 | 123.6 | 119.4 | 120.1 | 120.4 | 119.7 | 119.7 |
| Fuel, light and water | 0.71 | 100.0 | 101.6 | 86.1 | 71.0 | 54.2 | 61.1 | 59.1 | 63.1 | 66.9 | 66.2 | 68.0 | 75.5 | 84.7 | 86.9 | 86.4 | 87.6 | 87.6 | 89.5 | 92.4 | 85.5 | 93.4 | 89.7 | 91.5 | 90.7 | 90.7 | 90.7 | 90.2 | 83.0 | 83.0 | 83.0 | 83.0 | |
| Services | 1.52 | 100.0 | 104.7 | 104.9 | 104.9 | 89.1 | 88.8 | 96.6 | 96.4 | 99.1 | 99.1 | 99.1 | 99.1 | 99.1 | 105.6 | 111.6 | 111.6 | 113.1 | 115.7 | 112.1 | 112.5 | 112.9 | 112.9 | 112.9 | 111.7 | 112.0 | 112.0 | 109.3 | 109.2 | 109.1 | 108.0 | | |
| Miscellaneous | 1.25 | 100.0 | 100.8 | 101.3 | 101.5 | 101.6 | 101.6 | 103.5 | 121.5 | 122.4 | 123.1 | 123.1 | 123.3 | 123.4 | 122.2 | 123.4 | 123.4 | 123.5 | 123.5 | 123.9 | 124.4 | 124.6 | 125.1 | 125.0 | 125.1 | 125.3 | 126.1 | 122.6 | 124.0 | 123.9 | 131.8 | 132.0 | |
| POHNPEI | | | | | | | | | | | | | | | | | | | | | | | | | | | | | | | | | |
| ALL GROUPS | 41.48 | 100.0 | 107.9 | 107.5 | 109.9 | 111.8 | 112.4 | 114.0 | 114.6 | 118.3 | 118.6 | 119.5 | 121.2 | 121.3 | 125.5 | 128.3 | 128.9 | 130.7 | 130.1 | 130.1 | 129.9 | 130.6 | 132.3 | 131.2 | 130.6 | 132.1 | 132.4 | 130.4 | 131.0 | 130.5 | 131.4 | | |
| <i>Domestic items</i> | 13.35 | 100.0 | 104.7 | 102.8 | 105.2 | 105.5 | 105.1 | 107.3 | 108.1 | 111.7 | 112.6 | 113.9 | 114.9 | 125.0 | 127.4 | 126.3 | 131.5 | 130.1 | 132.0 | 130.3 | 131.7 | 133.2 | 133.2 | 133.3 | 134.2 | 134.7 | 135.8 | 133.2 | 135.4 | 135.7 | 138.2 | | |
| <i>Imported items</i> | 28.13 | 100.0 | 109.4 | 109.8 | 112.2 | 114.7 | 115.9 | 117.1 | 117.8 | 121.4 | 121.8 | 122.7 | 124.6 | 124.3 | 125.7 | 128.7 | 130.1 | 130.3 | 130.2 | 129.2 | 129.7 | 130.0 | 131.8 | 130.3 | 131.1 | 131.2 | 130.8 | 129.1 | 128.9 | 128.1 | 128.2 | | |
| ALL GROUPS | 41.48 | 100.0 | 107.9 | 107.5 | 109.9 | 111.8 | 112.4 | 114.0 | 114.6 | 118.3 | 118.6 | 119.5 | 121.2 | 121.3 | 125.5 | 128.3 | 128.9 | 130.7 | 130.1 | 130.1 | 129.9 | 130.6 | 132.3 | 131.2 | 130.6 | 132.1 | 132.4 | 130.4 | 131.0 | 130.5 | 131.4 | | |
| Food | 14.54 | 100.0 | 114.6 | 116.4 | 122.0 | 123.4 | 124.0 | 125.8 | 127.2 | 132.7 | 132.3 | 132.7 | 133.3 | 131.4 | 131.6 | 134.0 | 136.0 | 135.2 | 135.3 | 134.7 | 136.2 | 137.5 | 138.4 | 137.4 | 136.2 | 138.8 | 138.7 | 139.2 | 139.1 | 137.5 | 136.4 | 136.3 | |
| ATSB ¹ | 5.90 | 100.0 | 100.4 | 101.0 | 114.6 | 115.6 | 115.6 | 115.4 | 115.7 | 123.3 | 124.1 | 124.8 | 125.5 | 125.6 | 144.2 | 145.9 | 145.8 | 145.8 | 145.8 | 143.5 | 143.2 | 144.4 | 144.3 | 143.1 | 143.4 | 142.9 | 141.3 | 141.9 | 145.0 | 146.7 | 147.9 | | |
| Clothing and footwear | 2.65 | 100.0 | 101.5 | 103.9 | 105.1 | 114.1 | 114.1 | 117.0 | 118.7 | 118.8 | 119.2 | 119.2 | 119.8 | 119.8 | 119.9 | 125.6 | 131.1 | 131.3 | 131.3 | 130.5 | 130.1 | 130.6 | 130.6 | 130.3 | 129.0 | 126.7 | 128.9 | 129.9 | 135.8 | 136.2 | 138.8 | | |
| Housing | 1.63 | 100.0 | 100.7 | 108.0 | 107.4 | 107.4 | 107.4 | 108.0 | 108.0 | 108.0 | 108.2 | 108.2 | 108.2 | 108.2 | 109.1 | 109.6 | 109.6 | 111.8 | 111.9 | 110.9 | 110.9 | 112.7 | 113.2 | 113.2 | 113.6 | 113.6 | 114.1 | 114.1 | 113.0 | 117.7 | | | |
| Fuel, light and water | 3.92 | 100.0 | 112.6 | 104.5 | 81.1 | 81.7 | 83.4 | 88.2 | 89.7 | 91.3 | 93.5 | 100.4 | | | | | | | | | | | | | | | | | | | | | |

Table 5: Contribution to Annual CPI Change by State and Commodity Group

| | Weight | Q2-08 | Q3-08 | Q4-08 | Q1-09 | Q2-09 | Q3-09 | Q4-09 | Q1-10 | Q2-10 | Q3-10 | Q4-10 | Q1-11 | Q2-11 | Q3-11 | Q4-11 | Q1-12 | Q2-12 | Q3-12 | Q4-12 | Q1-13 | Q2-13 | Q3-13 | Q4-13 | Q1-14 | Q2-14 | Q3-14 | Q4-14 | Q1-15 | Q2-15 | Q3-15 | Q4-15 | |
|-----------------------|--------|-------|-------|-------|-------|-------|-------|-------|-------|-------|-------|-------|-------|-------|-------|-------|-------|-------|-------|-------|-------|-------|-------|-------|-------|-------|-------|-------|-------|-------|-------|-------|------|
| FSM | | | | | | | | | | | | | | | | | | | | | | | | | | | | | | | | | |
| ALL GROUPS | 100.00 | 5.3 | 13.0 | 10.6 | 9.2 | 9.5 | 2.1 | 3.6 | 3.4 | 3.5 | 4.3 | 3.2 | 4.5 | 4.0 | 5.4 | 7.6 | 6.7 | 7.1 | 3.8 | 2.5 | 2.5 | 1.6 | 1.9 | 0.9 | 0.7 | 0.8 | 0.5 | 0.9 | -0.5 | -0.7 | -1.0 | -0.9 | |
| Domestic items | 23.69 | 0.8 | 1.2 | 0.3 | -0.1 | 1.6 | 0.9 | 1.6 | 1.5 | 0.9 | 1.5 | 1.3 | 1.4 | 1.4 | 2.1 | 2.8 | 2.2 | 2.5 | 1.5 | 1.0 | 1.3 | 0.7 | 0.5 | 0.3 | 0.4 | 0.2 | 0.3 | 0.3 | -0.2 | -0.2 | -0.2 | 0.0 | |
| Imported items | 76.31 | 4.5 | 11.8 | 10.2 | 9.4 | 7.9 | 1.1 | 2.0 | 1.9 | 2.6 | 2.9 | 1.9 | 3.1 | 2.5 | 3.3 | 4.8 | 4.6 | 4.6 | 2.4 | 1.5 | 1.3 | 0.9 | 1.4 | 0.6 | 0.4 | 0.6 | 0.2 | 0.5 | -0.2 | -0.5 | -0.8 | -0.9 | |
| ALL GROUPS | 100.00 | 5.3 | 13.0 | 10.6 | 9.2 | 9.5 | 2.1 | 3.6 | 3.4 | 3.5 | 4.3 | 3.2 | 4.5 | 4.0 | 5.4 | 7.6 | 6.7 | 7.1 | 3.8 | 2.5 | 2.5 | 1.6 | 1.9 | 0.9 | 0.7 | 0.8 | 0.5 | 0.9 | -0.5 | -0.7 | -1.0 | -0.9 | |
| Food | 37.10 | 2.2 | 7.9 | 8.1 | 8.9 | 7.9 | 2.4 | 2.0 | 0.3 | 0.9 | 0.4 | 0.4 | 1.4 | 0.9 | 1.6 | 1.9 | 2.0 | 2.1 | 1.3 | 1.2 | 1.1 | 0.9 | 1.0 | 0.4 | 0.2 | 0.5 | 0.3 | 0.4 | 0.4 | 0.1 | -0.2 | -0.6 | |
| ATSB ¹ | 12.17 | 0.3 | 0.3 | 0.2 | 1.0 | 1.2 | 1.4 | 1.4 | 0.7 | 0.7 | 1.5 | 0.6 | 0.6 | 0.4 | 0.9 | 2.0 | 1.8 | 1.6 | 0.1 | -0.2 | -0.1 | -0.0 | 0.1 | 0.2 | 0.1 | 0.1 | 0.0 | 0.0 | 0.0 | 0.0 | 0.2 | 0.1 | |
| Clothing and footwear | 5.52 | 0.2 | 0.2 | 0.2 | 0.2 | 0.5 | 0.4 | 0.4 | 0.4 | 0.2 | 0.2 | 0.1 | 0.1 | 0.1 | 0.1 | 0.1 | 0.1 | 0.1 | 0.3 | 0.4 | 0.3 | 0.2 | 0.0 | -0.0 | -0.0 | -0.0 | -0.0 | 0.0 | 0.1 | 0.3 | 0.3 | 0.5 | |
| Housing | 3.18 | 0.1 | 0.1 | 0.1 | 0.2 | 0.2 | 0.1 | 0.1 | 0.0 | 0.0 | 0.0 | 0.0 | 0.0 | 0.0 | 0.1 | 0.1 | 0.1 | 0.1 | 0.1 | 0.0 | 0.0 | 0.0 | 0.0 | 0.1 | 0.1 | 0.0 | 0.0 | 0.0 | -0.0 | -0.0 | 0.0 | 0.1 | |
| Fuel, light and water | 9.33 | 0.3 | 1.1 | 0.1 | -1.9 | -0.1 | -1.0 | -0.1 | 1.1 | 0.4 | 0.9 | 1.1 | 1.3 | 1.6 | 1.1 | 1.1 | 0.5 | 1.1 | 0.8 | 0.7 | 0.9 | 0.2 | 0.3 | 0.0 | 0.2 | 0.3 | 0.2 | 0.3 | -0.8 | -0.9 | -0.9 | -0.8 | |
| Services | 16.89 | 1.4 | 2.3 | 0.9 | -0.5 | -1.2 | -2.1 | -1.1 | 0.1 | 0.8 | 0.7 | 0.5 | 0.8 | 0.4 | 1.0 | 1.6 | 1.3 | 1.4 | 0.9 | 0.3 | 0.3 | 0.1 | 0.1 | 0.1 | 0.1 | 0.1 | 0.1 | 0.0 | 0.2 | -0.1 | -0.1 | -0.1 | -0.3 |
| Miscellaneous | 15.82 | 0.2 | 0.5 | 0.5 | 0.8 | 0.9 | 0.8 | 0.8 | 0.8 | 0.6 | 0.5 | 0.6 | 0.4 | 0.6 | 0.6 | 0.7 | 0.6 | 0.5 | 0.3 | 0.3 | 0.3 | 0.3 | 0.5 | 0.2 | 0.1 | 0.1 | 0.1 | -0.1 | -0.1 | -0.2 | -0.3 | -0.2 | -0.1 |
| KOSRAE | | | | | | | | | | | | | | | | | | | | | | | | | | | | | | | | | |
| ALL GROUPS | 7.67 | 0.7 | 0.8 | 0.5 | 0.3 | -0.2 | -0.4 | -0.0 | 0.2 | 0.6 | 0.5 | 0.2 | 0.2 | 0.1 | 0.3 | 0.5 | 0.5 | 0.5 | 0.4 | 0.4 | 0.3 | 0.3 | 0.2 | 0.03 | 0.04 | -0.01 | 0.07 | 0.04 | 0.00 | -0.04 | -0.01 | -0.02 | |
| Domestic items | 1.47 | 0.1 | 0.1 | -0.0 | -0.1 | -0.2 | -0.2 | -0.1 | 0.0 | 0.1 | 0.1 | 0.1 | 0.1 | 0.1 | 0.1 | 0.2 | 0.1 | 0.1 | 0.1 | 0.1 | 0.0 | 0.1 | 0.0 | 0.04 | 0.06 | -0.02 | 0.01 | -0.02 | -0.06 | -0.06 | -0.07 | -0.06 | |
| Imported items | 6.20 | 0.6 | 0.7 | 0.6 | 0.5 | 0.1 | -0.1 | 0.1 | 0.1 | 0.5 | 0.4 | 0.2 | 0.1 | 0.0 | 0.2 | 0.3 | 0.3 | 0.4 | 0.3 | 0.3 | 0.3 | 0.2 | 0.1 | -0.01 | -0.02 | 0.01 | 0.06 | 0.06 | 0.06 | 0.02 | 0.05 | 0.04 | |
| ALL GROUPS | 7.67 | 0.7 | 0.8 | 0.5 | 0.3 | -0.2 | -0.4 | -0.0 | 0.2 | 0.6 | 0.5 | 0.2 | 0.2 | 0.1 | 0.3 | 0.5 | 0.5 | 0.5 | 0.4 | 0.4 | 0.3 | 0.3 | 0.2 | 0.03 | 0.04 | -0.01 | 0.07 | 0.04 | 0.00 | -0.04 | -0.01 | -0.02 | |
| Food | 3.37 | 0.2 | 0.5 | 0.4 | 0.3 | 0.3 | 0.1 | 0.2 | 0.1 | 0.2 | 0.0 | -0.1 | 0.1 | -0.0 | 0.1 | 0.2 | 0.2 | 0.2 | 0.2 | 0.3 | 0.2 | 0.2 | 0.0 | -0.01 | 0.00 | 0.07 | 0.10 | 0.10 | 0.05 | 0.01 | -0.02 | | |
| ATSB ¹ | 0.32 | 0.1 | 0.1 | 0.1 | 0.0 | -0.0 | 0.0 | 0.0 | 0.0 | 0.0 | 0.0 | 0.0 | 0.0 | 0.0 | 0.0 | 0.0 | 0.0 | 0.0 | 0.0 | 0.0 | 0.0 | 0.0 | 0.0 | 0.01 | 0.01 | 0.00 | -0.01 | -0.01 | - | - | - | | |
| Clothing and footwear | 0.31 | 0.0 | 0.0 | 0.0 | 0.0 | 0.0 | 0.0 | 0.0 | 0.0 | -0.0 | -0.0 | -0.0 | -0.0 | 0.0 | 0.0 | 0.0 | 0.0 | 0.0 | - | - | - | - | 0.0 | 0.0 | 0.00 | 0.00 | -0.00 | 0.00 | 0.00 | 0.00 | 0.00 | -0.00 | |
| Housing | 0.20 | 0.0 | 0.0 | 0.0 | 0.0 | 0.0 | 0.0 | 0.0 | 0.0 | 0.0 | 0.0 | 0.0 | 0.0 | 0.0 | 0.0 | 0.0 | 0.0 | 0.0 | 0.0 | 0.0 | 0.0 | 0.0 | -0.0 | - | 0.00 | 0.00 | 0.00 | -0.00 | -0.01 | -0.01 | -0.01 | 0.00 | |
| Fuel, light and water | 0.71 | 0.1 | 0.1 | -0.1 | -0.2 | -0.3 | -0.3 | -0.2 | -0.1 | 0.1 | 0.0 | 0.1 | 0.1 | 0.1 | 0.1 | 0.1 | 0.1 | 0.0 | 0.0 | 0.0 | -0.0 | 0.0 | 0.0 | -0.01 | 0.03 | -0.02 | 0.01 | -0.01 | -0.04 | -0.04 | -0.04 | -0.04 | |
| Services | 1.52 | 0.2 | 0.1 | 0.1 | 0.1 | -0.2 | -0.2 | -0.1 | -0.1 | 0.1 | 0.1 | 0.0 | 0.0 | 0.0 | 0.1 | 0.2 | 0.2 | 0.2 | 0.1 | 0.0 | 0.0 | -0.0 | -0.0 | 0.01 | -0.01 | -0.01 | -0.01 | -0.01 | -0.03 | -0.03 | -0.03 | -0.05 | |
| Miscellaneous | 1.25 | 0.0 | 0.0 | 0.0 | 0.0 | 0.0 | 0.0 | 0.0 | 0.2 | 0.2 | 0.2 | 0.2 | 0.0 | 0.0 | -0.0 | 0.0 | 0.0 | 0.0 | 0.0 | 0.0 | 0.0 | 0.0 | 0.0 | 0.01 | 0.01 | 0.01 | 0.01 | -0.02 | -0.01 | -0.01 | 0.06 | 0.09 | |
| POHNPEI | | | | | | | | | | | | | | | | | | | | | | | | | | | | | | | | | |
| ALL GROUPS | 41.48 | 2.7 | 5.7 | 5.3 | 5.4 | 4.9 | 1.7 | 2.5 | 1.8 | 2.5 | 2.3 | 2.0 | 2.4 | 1.1 | 2.5 | 3.2 | 2.8 | 3.3 | 1.6 | 0.6 | 0.3 | -0.0 | 0.7 | 0.4 | 0.2 | 0.5 | 0.0 | 0.4 | -0.1 | -0.4 | -0.6 | -0.3 | |
| Domestic items | 13.35 | 1.0 | 1.6 | 1.3 | 0.9 | 0.7 | 0.1 | 0.6 | 0.4 | 0.8 | 0.8 | 0.6 | 0.7 | 0.4 | 1.5 | 1.7 | 1.4 | 1.9 | 0.6 | 0.5 | 0.4 | 0.0 | 0.3 | 0.1 | 0.3 | 0.3 | 0.2 | 0.3 | -0.0 | 0.1 | 0.1 | 0.2 | |
| Imported items | 28.13 | 1.6 | 4.1 | 3.9 | 4.5 | 4.1 | 1.7 | 1.9 | 1.5 | 1.7 | 1.5 | 1.4 | 1.7 | 0.7 | 0.9 | 1.5 | 1.3 | 1.4 | 1.0 | 0.1 | -0.1 | -0.1 | 0.4 | 0.2 | -0.1 | 0.2 | -0.1 | 0.1 | -0.0 | -0.5 | -0.7 | -0.6 | |
| ALL GROUPS | 41.48 | 2.7 | 5.7 | 5.3 | 5.4 | 4.9 | 1.7 | 2.5 | 1.8 | 2.5 | 2.3 | 2.0 | 2.4 | 1.1 | 2.5 | 3.2 | 2.8 | 3.3 | 1.6 | 0.6 | 0.3 | -0.0 | 0.7 | 0.4 | 0.2 | 0.5 | 0.0 | 0.4 | -0.1 | -0.4 | -0.6 | -0.3 | |
| Food | 14.54 | 1.1 | 3.1 | 3.2 | 3.8 | 3.4 | 1.3 | 1.3 | 0.7 | 1.2 | 1.1 | 0.9 | 0.8 | -0.2 | -0.1 | 0.2 | 0.3 | 0.5 | 0.4 | 0.1 | 0.0 | 0.3 | 0.4 | 0.3 | 0.0 | 0.1 | 0.0 | 0.2 | 0.3 | -0.1 | -0.3 | -0.3 | |
| ATSB ¹ | 5.90 | 0.1 | 0.2 | 0.2 | 0.9 | 0.9 | 0.8 | 0.8 | 0.1 | 0.4 | 0.5 | 0.5 | 0.1 | 1.0 | 1.1 | 1.0 | 1.0 | 1.0 | 0.1 | -0.1 | -0.1 | -0.1 | -0.1 | -0.0 | 0.0 | -0.1 | -0.1 | -0.1 | 0.1 | 0.2 | 0.2 | 0.3 | |
| Clothing and footwear | 2.65 | 0.0 | 0.0 | 0.1 | 0.1 | 0.4 | 0.3 | 0.3 | 0.3 | 0.1 | 0.1 | 0.1 | 0.0 | 0.0 | 0.0 | 0.1 | 0.3 | 0.3 | 0.2 | 0.1 | -0.0 | -0.0 | -0.0 | -0.0 | -0.0 | -0.1 | -0.0 | -0.0 | 0.1 | 0.2 | 0.2 | 0.2 | |
| Housing | 1.63 | 0.1 | 0.1 | 0.0 | 0.1 | 0.1 | 0.1 | 0.1 | 0.0 | 0.0 | 0.0 | 0.0 | 0.0 | 0.0 | 0.0 | 0.0 | 0.0 | 0.1 | 0.0 | 0.0 | 0.0 | 0.0 | 0.0 | 0.0 | 0.0 | 0.0 | 0.0 | 0.0 | 0.0 | 0.0 | 0.0 | 0.1 | |
| Fuel, light and water | 3.92 | 0.6 | 1.1 | 0.8 | -0.6 | -0.7 | -1.1 | -0.6 | 0.3 | 0.3 | 0.4 | 0.4 | 0.6 | 0.6 | 0.8 | 0.6 | 0.3 | 0.8 | 0.3 | 0.3 | 0.3 | -0.2 | 0.2 | 0.0 | 0.2 | 0.2 | 0.1 | 0.2 | -0.6 | -0.5 | -0.6 | -0.5 | |
| Services | 6.27 | 0.3 | 0.7 | 0.3 | 0.1 | -0.1 | -0.4 | -0.1 | 0.1 | 0.2 | 0.2 | 0.1 | 0.2 | 0.1 | 0.4 | 0.6 | 0.5 | 0.5 | 0.3 | 0.1 | 0.0 | -0.1 | -0.1 | -0.2 | -0.1 | 0.0 | 0.1 | 0.2 | 0.2 | 0.2 | 0.1 | -0.0 | |
| Miscellaneous | 6.57 | 0.0 | 0.2 | 0.3 | 0.6 | 0.9 | 0.6 | 0.6 | 0.3 | 0.1 | 0.1 | 0.0 | 0.3 | 0.3 | 0.3 | 0.5 | 0.3 | 0.2 | 0.2 | 0.1 | 0.1 | 0.1 | 0.3 | 0.1 | 0.1 | 0.2 | -0.1 | -0.1 | -0.1 | -0.2 | -0.2 | -0.0 | |
| CHUUK | | | | | | | | | | | | | | | | | | | | | | | | | | | | | | | | | |
| ALL GROUPS | 32.39 | 1.7 | 6.0 | 4.6 | 3.7 | 3.1 | -0.7 | -0.2 | -0.5 | -0.3 | 1.2 | 0.5 | 1.7 | 1.9 | 1.5 | 2.6 | 2.5 | 2.6 | 1.2 | 1.1 | 0.9 | 0.5 | 0.7 | 0.2 | 0.3 | 0.3 | 0.1 | 0.1 | -0.5 | -0.4 | -0.4 | -0.6 | |
| Domestic items | 4.86 | 0.2 | 0.2 | 0.1 | 0.1 | 0.1 | 0.1 | 0.1 | 0.1 | 0.6 | 0.6 | 0.6 | 0.6 | 0.0 | 0.3 | 0.3 | 0.3 | 0.3 | 0.1 | 0.1 | 0.2 | 0.1 | 0.0 | 0.0 | -0.0 | 0.0 | 0.0 | -0.2 | -0.3 | -0.2 | -0.2 | | |
| Imported items | 27.54 | 1.6 | 5.8 | 4.4 | 3.6 | 3.0 | -0.8 | -0.2 | -0.5 | -0.4 | 0.5 | -0.1 | 1.1 | 1.4 | 1.4 | 2.3 | 2.2 | 2.3 | 0.9 | 0.9 | 0.7 | 0.3 | 0.5 | 0.2 | 0.3 | 0.3 | 0.1 | 0.1 | -0.3 | -0.2 | -0.2 | -0.4 | |
| ALL GROUPS | 32.39 | 1.7 | 6.0 | 4.6 | 3.7 | 3.1 | -0.7 | -0.2 | -0.5 | -0.3 | 1.2 | 0.5 | 1.7 | 1.9 | 1.5 | 2.6 | 2.5 | 2.6 | 1.2 | 1.1 | 0.9 | 0.5 | 0.7 | 0.2 | 0.3 | 0.3 | 0.1 | 0.1 | -0.5 | -0.4 | -0.4 | -0.6 | |
| Food | 14.43 | 0.7 | 3.8 | 3.8 | 3.8 | 3.5 | 0.5 | 0.3 | -0.6 | -0.7 | -0.8 | -0.6 | 0.4 | 0.9 | 1.3 | 1.2 | 1.3 | 1.2 | 0.6 | 0.8 | 0.6 | 0.2 | 0.3 | -0.1 | 0.1 | 0.1 | 0.1 | 0.1 | -0.1 | -0.1 | -0.1 | -0.3 | |
| ATSB ¹ | 2.32 | 0.0 | 0.1 | 0.1 | 0.2 | 0.3 | 0.4 | 0.4 | 0.2</ | | | | | | | | | | | | | | | | | | | | | | | | |

Appendix 2: CPI Definitions

Base year: the year used as the reference year for constructing an index. It is usually defined an arbitrary value of 100. For example, assume the base year is 2000 and the initial value of an index is 100. If the index is 180 in 2009, the value of the index will be 80% higher in 2009 compared to what it was in 2000. A base year is used for comparison by an index such as CPI.

Basket of goods and services: a fixed list of goods and services (market basket) that is used for tracking the prices of consumer goods and services offered at a specific market. It is the base for the definition of the Consumer Price Index (CPI). The list used would contain a number of food and household items commonly bought by a typical consumer. The items may be classified into groups such as “household items”, “personal goods and services”, “households services”, “housing” and other categories defined by the country’s survey methodology. The variations in the prices of the items on a monthly or quarterly basis provide an indication of trends in price.

Commodities: Tangible basic goods, such as food, grains, metal and oil which are produced in large quantities by many different producers and bought and sold in commerce. They are equivalent (as it does not depend of whom produces it) and maintain roughly a universal price that fluctuates on a daily basis based on global demand and supply

Commodity Group: a set of commodities of which any combination of quantities is described by common set of characteristics. [See Appendix 3 for details]

Domestic items: Any good, commodity or service purchased within countries for sale. It is provided to domestic consumers by local producers.

Imported items: Any good, commodity or service purchased from other countries for sale. It is provided to domestic consumers by foreign producers.

Import price index: It measures changes in a group of data points for imported goods, commodities or services. It includes only items that are imported for a country. For the FSM such include coffee, cars, fuel and computers among others.

Domestic price index: It measures changes in a group of data points for goods, commodities and services locally produced (e.g. bread loaf, sakau, electricity).

Index: a statistical measure of changes in a group of individual data points in an economy. The data can be derived from different sources such as prices, productivity, and employment. The CPI, for example, tracks the variation in prices for different consumer goods and services within the same city, region or country. Each index has a different methodology of calculation and it is usually expressed in terms of a change from a base value. It is often used to make adjustments in wages, salaries, pensions, and contracted or regulated prices.

Inflation: a persistent rise in the average price level of goods and services in the economy over time. When the price level increases, consumers tend to buy fewer goods and services, therefore inflation erodes the purchasing power of money.

Inflation rate: the percentage change in the price level from one period to another (e.g. from December 2009 to January 2010). CPI is the price index that is used to measure the inflation.

Deflation: it refers to a fall in the general price level.

Percentage change: Percentage represents a number as a fraction of 100 and is denoted using the sign “%”. Percentage change is used to express how small/large one quantity is relatively to another quantity. It represents a change in a variable between two periods, and is accordingly to a specific formula (percentage change = $V_2 - V_1 / V_1 * 100$; V_1 represents the old value and V_2 the new one). Both percent increase and percent decrease are measures of percent change and they represent the extent to which a variable gains or loses value, extent, and magnitude.

Percentage point: The unit for the difference of two percentages. For example, if inflation in country “X” was 6% in 2008 and rose to 7% in 2009, so inflation grew by one percentage point (7% - 6% = 1 percentage point)

Services: Intangible and insubstantial as they can’t be touched, handled, smelled or tasted. A service is owned or sold by the service provider who must generate and render the service to the requesting service consumer (e.g. hairdresser who delivers the service to a client; taxi driver who transports a consumer from one place to another). Types of services include transportation, health, education, communication and finance.

Weight: a measure of the relative importance of a specific item; e.g. rice has a high weight as it is an important item of consumer spending, so the price of rice is assigned a higher weight (say ‘15’) than soap (say ‘3’) due to the greater importance of rice to the consumers.

Appendix 3: Groups Composition

| Group | Sub-group | Examples of Items Priced |
|-----------------------------------|--------------------------------|--|
| Food | Cereal & Cereal Products | Rice, Noodles, Bread |
| | Meat & Poultry | Pork, Canned Corned Beef, Frozen Chicken |
| | Fish | Fresh Tuna, Fresh Reef Fish, Canned Sardines |
| | Fruits & Vegetables | Onions, Taro, Bananas |
| | Dairy & Vegetable Products | Milk, Ice Cream, Eggs |
| | Non-Alcoholic Beverages | Softdrink, Orange Juice, Coffee |
| | Miscellaneous Foods | Sugar, Soy Sauce, Vegetable Oil |
| | Meals Away from Home | Restaurant Meals, School Lunch |
| Alcohol, Tobacco, Sakau, Betelnut | Alcohol | Beer, Vodka, Sakau |
| | Tobacco | Cigarette, Betelnut |
| Clothing & Footwear | Clothing | Shirt, Blouse, Diapers |
| | Footwear | Sneakers, Zorries |
| Housing | House Maintenance | Cement, Paint, Timber |
| | House Rent | House Rent |
| Fuel, Light and Water | Fuel | Kerosene, Butane or Cooking Gas |
| | Light | Electricity |
| | Water | Water |
| Services | Educational Services | Primary school fees, Secondary school fees, Notebook |
| | Medical Services | Hospital fee, Doctors fee, Medicine |
| | Personal Goods | Laundromat, Housekeeping |
| | Recreational Services | Fishing Equipment, DVD Rental, Cable TV |
| | Transportation & Communication | Taxi fare, Gasoline, Telephone Bill |
| Miscellaneous | Durable Furniture & Equipment | Refrigerator, TV Set, Car |
| | Non-Durable Furnishings | Mattress, Towel |
| | Utensils & Accessories | Cutlery, Kitchen Utensils, Plates |
| | Household Operations | Detergent, Mosquito Coil, Battery |
| | Personal Care and Effects | Soap, Deodorant, Shampoo |